



Interagency Aviation Information Bulletin



No. IA IB 24-05

Date: August 15, 2024

Page 1 of 2

Subject: Temporary Flight Restrictions (TFRs) crossing multiple Air Route Traffic Control Center (ARTCC) Airspace Boundaries¹

Area of Concern: Airspace, TFRs, and NOTAM Composition

Distribution: Aviation Operations and Dispatch Centers

Discussion: Recent events highlighted the need to review Federal Aviation Administration (FAA) requirements related to TFRs that cross multiple ARTCC airspace boundaries. In accordance with [FAA JO 7930.2T](#), the mandatory affected location must contain the ARTCC designator followed by the state(s) abbreviation; for example: ZDC VA, after the NOTAM number. Additionally, TFRs covering multiple ARTCCs must have a separate NOTAM for each ARTCC. In other words, if the TFR affects more than one ARTCC, a separate TFR is required for each affected ARTCC.

FAA Requirements: *Duplicate TFR notices must be issued for all ARTCCs affected.* Under this policy, it is possible for one incident to require more than one TFR associated with the same incident. Currently, we are unable to obtain a single approval for one TFR that crosses multiple ARTCC airspace boundaries. As a result, Dispatchers will need to issue a separate A# for each separate TFR.

Caution: Due to delays with TFRs graphically depicting new, replacement, and cancellations, updates may be delayed up to an hour or more beyond the TFR effective time. This may result in outdated and overlapping depictions of TFRs until all systems have processed any updated data and subsequently resolved any discrepancies. Each flight planning platform may depict different results.

Example: Special Government Interest (SGI) waiver or Certificate of Authorization (COA) language, indicating both ARTCCs for RIVER COMPLEX.

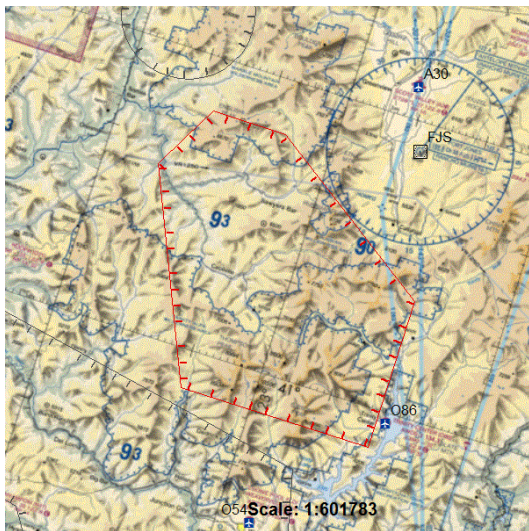
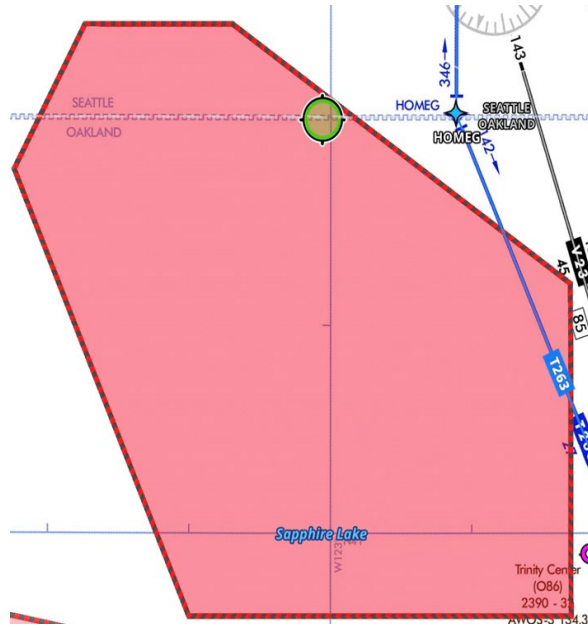
- Location and Class of Airspace: WI fire issued TFR ZSE 1/2912 and ZOA 1/2927 – and subsequent TFR's issued in association with the River Complex Fire ZSE/ZOA Class G at or Below: 12,500FT MSL
Operations areas: Within area depicted in ATTACHMENT #1 under the jurisdiction of Forest Service Yreka Dispatch and Oakland (ZOA) ARTCC and Seattle (ZSE) ARTCC.

¹ Originally published as IA IB 21-09 on September 24, 2021. Revision includes the caution statement and minor revisions.

TFR depiction in ForeFlight:

- TFR** ZOA 1/2927 TFR (2011-2927-1)
 Aug 20, 9:00 PM - Sep 20, 1:00 AM EDT (FAA)
 Active, Surface - 12,500' MSL

- TFR** ZSE 1/2912 TFR (2011-2912-1)
 Aug 20, 8:45 PM - Sep 20, 1:00 AM EDT (FAA)
 Active, Surface - 12,500' MSL



08/21/2021	1/2927	ZOA	CA	HAZARDS	45NM NW REDDING, CA, Saturday, August 21, 2021 through Monday, September 20, 2021 UTC
08/21/2021	1/2912	ZSE	CA	HAZARDS	45NM NW REDDING, CA, Saturday, August 21, 2021 through Monday, September 20, 2021 UTC

Note: Selecting either of the NOTAM numbers in the FAA TFR website (<https://tfr.faa.gov/tfr2/list.html>) will bring up the same TFR graphic.

/s/ **Keith C. Raley**

Keith C. Raley
 Chief, Aviation Safety, Training, Program
 Evaluation, and Quality Management
 DOI, Office of Aviation Services

/s/ **Lori Clark**

Lori Clark
 Branch Chief
 Aviation Safety Management Systems
 USDA, Forest Service