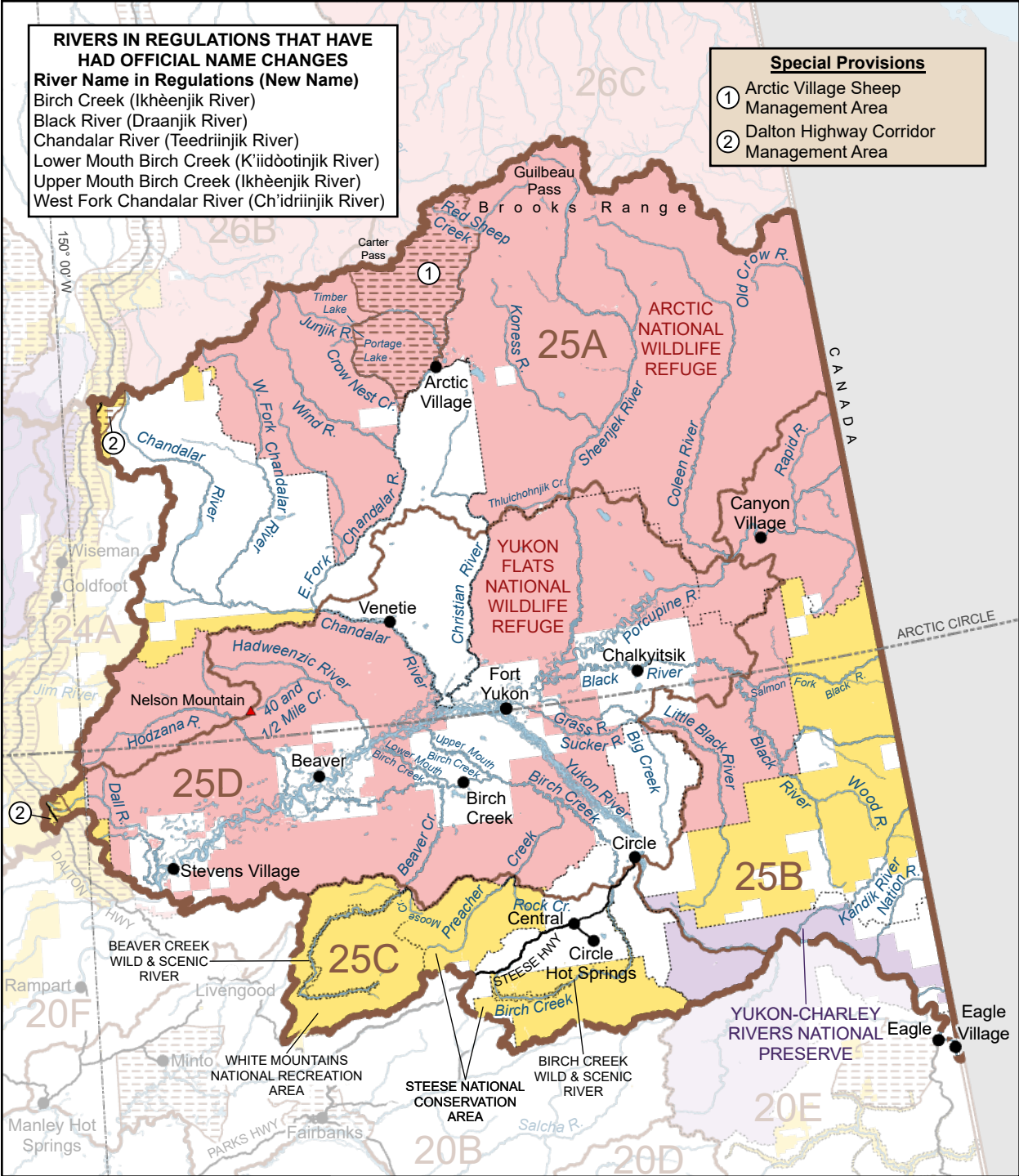


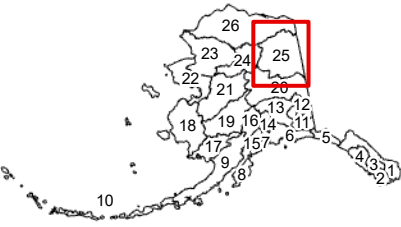
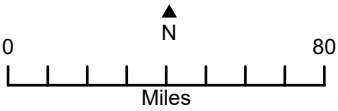
RIVERS IN REGULATIONS THAT HAVE HAD OFFICIAL NAME CHANGES
River Name in Regulations (New Name)
 Birch Creek (Ikhèenjìk River)
 Black River (Draanjìk River)
 Chandalar River (Teedriinjìk River)
 Lower Mouth Birch Creek (K'iidòotinjìk River)
 Upper Mouth Birch Creek (Ikhèenjìk River)
 West Fork Chandalar River (Ch'idriinjìk River)

Special Provisions
 ① Arctic Village Sheep Management Area
 ② Dalton Highway Corridor Management Area



Unit 25
 Fort Yukon

Region 9: Eastern Interior



Federal Public Lands Open to Subsistence Use

- Closed to Subsistence
- Special Use Area
- BLM Administered Lands
- NPS Administered Parks
- NPS Administered Preserves
- USFS Administered Lands
- USFWS Administered Lands