



# Federal Subsistence Board News Release



U.S. Fish and Wildlife Service  
Bureau of Land Management  
National Park Service  
Bureau of Indian Affairs

Forest Service

## For Immediate Release:

July 10, 2025

Contact: Spencer Rearden

(907) 621-6129  
Spencer\_Rearden@fws.gov

## Kuskokwim River Mainstem Fishing Opportunities

Pursuant to authority delegated by the Federal Subsistence Board, the Yukon Delta National Wildlife Refuge Manager, as In-Season Manager, hereby announces additional fishing opportunities for **Federally qualified subsistence users only**:

**Lower Kuskokwim Fishing Opportunity:** In the Kuskokwim River main stem, from the Refuge boundary at the mouth of the Kuskokwim River to the Kalskag Line (see maps), **gillnet** will be allowed effective:

### Drift/Set

- **July 12, 2025 from 7:00 am to 7:00 pm (12 hours).**
- **July 19, 2025 from 7:00 am to 7:00 pm (12 hours).**

Gillnets are restricted to 6-inch or less mesh and may not exceed 45 meshes in depth and 50 fathoms (300-feet) in aggregate (total set and drift gillnet) length below the Johnson River and 25 fathoms (150 feet) in aggregate (total set and drift gillnet) length above the Johnson River. All species of salmon may be retained during this opportunity. The salmon bearing tributaries, and the Aniak Box listed in FSA-YD-25-01 will remain closed to all gillnets. When these two harvest opportunities expire, Federal public waters of the Kuskokwim River, downstream of the Kalskag line and to the mouth of the Kuskokwim River will return to closed to the use of drift gillnets by all users for the protection of Chinook, Chum and Coho Salmon.

### SET NET ONLY

- **July 12, 2025 from 7:01 pm to July 26, 2025 10:00 pm.**

**Set gillnets** are restricted to 6-inch or less mesh, may not exceed 45 meshes in depth, and 75 feet in length. All species of salmon may be retained during this opportunity. The salmon bearing tributaries, and the Aniak Box listed in FSA-YD-25-01 will remain closed to all gillnets. When this harvest opportunity expires, Federal public waters of the Kuskokwim River, downstream of the Kalskag Line and to the mouth of the Kuskokwim River will return to closed to the use of gillnets by all users for the protection of Chinook, Chum and Coho Salmon.

Fishing with gillnets above the Kalskag Line; and fishing with rod and reel within the Aniak Box remains open until further notice (details stated in the 2025 Second Announcement released June 18, 2025).

Information about the Federal Subsistence Management Program may be found on the web at [www.doi.gov/subsistence](http://www.doi.gov/subsistence) or by visiting [www.facebook.com/subsistencealaska](https://www.facebook.com/subsistencealaska).

**Missing out on the latest Federal subsistence issues?** If you'd like to receive emails and notifications on the Federal Subsistence Management Program you may subscribe for regular updates by emailing [fws-fsb-subsistence-request@lists.fws.gov](mailto:fws-fsb-subsistence-request@lists.fws.gov).

~~###~~





## Lower River Fishing and Closure Area

### Legend

- Area closed unless opened for gillnet fishing
- Closed to all means and methods for Chinook, Chum, and Coho Salmon
- YDNWR Boundary

Johnson Line North  
Degrees Minutes Seconds  
Latitude: 60° 39' 25"  
Longitude: -162° 6' 7"

Decimal Degrees  
Latitude: 60.65704  
Longitude: -162.10193

Johnson Line South  
Degrees Minutes Seconds  
Latitude: 60° 37' 2"  
Longitude: -162° 4' 7"

Decimal Degrees  
Latitude: 60.61726  
Longitude: -162.06855

Refuge Boundary West Bank  
Degrees Minutes Seconds  
Latitude: 59° 59' 46"  
Longitude: -162° 30' 54"

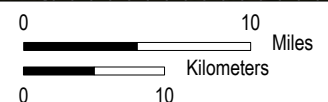
Decimal Degrees  
Latitude: 59.99616  
Longitude: -162.51489

Refuge Boundary East Bank  
Degrees Minutes Seconds  
Latitude: 59° 59' 46"  
Longitude: -162° 10' 56"

Decimal Degrees  
Latitude: 59.99616  
Longitude: -162.18217



While the U.S. Fish & Wildlife Service makes every effort to represent the data shown on these maps as completely and accurately as possible, the USFWS gives no warranty, expressed or implied, as to the accuracy, reliability, or completeness of these data. In addition, the USFWS shall not be held liable for improper or incorrect use of the data described and/or contained herein. Graphical representations provided by the use of this data do not represent any legal description of the data herein and are provided only as a general representation of the data. Descriptions presented in special actions supersede any depictions provided in this map.



Earthstar Geographics





## Middle River Fishing and Closure Area

## Legend

- Closed to gillnet fishing unless opened by announcement.
- Area remains open for dip nets, beach seines, fish wheels, and rod and reel.
- Closed to all means and methods for Chinook, Chum, and Coho Salmon.
- YDNWR Boundary
- Aniak Box

Kalskag Line West Bank  
Degrees Minutes Seconds  
Latitude: 61° 20' 22"  
Longitude: -160° 36' 49"

Decimal Degrees  
Latitude: 61.33944  
Longitude: -160.61363

Kalskag Line East Bank  
Degrees Minutes Seconds  
Latitude: 61° 20' 18"  
Longitude: -160° 35' 44"

Decimal Degrees  
Latitude: 61.33833  
Longitude: -160.59558

Degrees Minutes Seconds  
Latitude: 61° 35' 16"  
Longitude: -159° 33' 27"

Decimal Degrees  
Latitude: 61.58775  
Longitude: -159.55763

Degrees Minutes Seconds  
Latitude: 61° 35' 37"  
Longitude: -159° 33' 16"

Decimal Degrees  
Latitude: 61.59348  
Longitude: -159.5544

Degrees Minutes Seconds  
Latitude: 61° 34' 57"  
Longitude: -159° 31' 3"

Decimal Degrees  
Latitude: 61.58259  
Longitude: -159.5174

Degrees Minutes Seconds  
Latitude: 61° 34' 40"  
Longitude: -159° 31' 3"

Decimal Degrees  
Latitude: 61.57786  
Longitude: -159.5174

Aniak Box



While the U.S. Fish & Wildlife Service makes every effort to represent the data shown on these maps as completely and accurately as possible, the USFWS gives no warranty, expressed or implied, as to the accuracy, reliability, or completeness of these data. In addition, the USFWS shall not be held liable for improper or incorrect use of the data described and/or contained herein. Graphical representations provided by the use of this data do not represent any legal description of the data herein and are provided only as a general representation of the data. Descriptions presented in special actions supersede any depictions provided in this map.

