



Federal Subsistence Board News Release



U.S. Fish and Wildlife Service
Bureau of Land Management
National Park Service
Bureau of Indian Affairs

Forest Service

For Immediate Release:

June 18, 2025

Contact: Spencer Rearden

(907) 621-6129
Spencer_Rearden@fws.gov

Kuskokwim River Mainstem Fishing Opportunities

Pursuant to authority delegated by the Federal Subsistence Board, the Yukon Delta National Wildlife Refuge Manager, as In-Season Manager, hereby announces additional fishing opportunities for **Federally qualified subsistence users only**:

- (1) **Lower Kuskokwim Fishing Opportunity:** In the Kuskokwim River main stem, from the Refuge boundary at the mouth of the Kuskokwim River to the Kalskag Line (see maps), **drift and set gillnets** will be allowed effective:

- **June 21, 2025 from 07:00 am through 07:00 pm.**
- **June 24, 2025 from 07:00 am through 07:00 pm.**

Gillnets are restricted to 6-inch or less mesh and may not exceed 45 meshes in depth and 50 fathoms (300-feet) in aggregate (total set and drift gillnet) length below the Johnson River and 25 fathoms (150 feet) in aggregate (total set and drift gillnet) length above the Johnson River. All species of salmon may be retained during this opportunity. The salmon bearing tributaries and the Aniak Box listed in FSA-YD-25-01 will remain closed to all gillnets. When this harvest opportunity expires, Federal public waters of the Kuskokwim River, downstream of the Kalskag Line and to the mouth of the Kuskokwim River will return to closed to the use of gillnets by all users for the protection of Chinook, Chum and Coho Salmon.

- (2) **Kalskag Line:** Defined as starting from an imaginary line between the south edge of Uknavik Slough (Lat. 61° 20' 22"; Long. -160° 36' 49") direct to the edge of the Kalskag bluff (Lat. 61° 20' 18"; Long. -160° 35' 44"). In the Kuskokwim River main stem upstream of this line to the lower boundary of the Aniak Box (see map and description below), **drift and set gillnets** will be allowed effective:

- **June 19, 2025 at 12:01 pm until further notice.**

Gillnets are restricted to 6-inch or less mesh and may not exceed 45 meshes in depth and 25 fathoms (150-feet) in aggregate (total set and drift gillnet). All species of salmon may be retained during this opportunity.

(3) **Aniak Box:** Defined as the waters of the Kuskokwim River near Aniak, from a line between two points (Lat. 61° 35' 37", Long. -159° 33' 16" and Lat 61° 35' 16", Long -159° 33' 28") upstream to a line formed between two other points (Lat. 61° 34' 58", Long. 159° 31' 03" and Lat. 61° 34' 43", Long. 159° 31' 06"), which is approximately the upstream boundary of the Yukon Delta National Wildlife Refuge (see map). This area will remain closed to fishing with gillnets, fish wheels, beach seines, and dip nets until further notice. Fishing with **rod and reel** within the Aniak Box will be allowed effective:

- **June 19, 2025 at 12:01 pm until further notice**, with the following bag limits:
 - a. Chinook Salmon:
 - i. Under 20 inches (as measured from the mid eye to the tail fork) may be retained with no bag or possession limits.
 - ii. Over 20 inches (as measured from the mid eye to the tail fork) may be retained with a 2 per day, 2 in possession limit.
 - b. Sockeye Salmon, Pink Salmon, and non-salmon species:
 - i. May be retained with no bag or possession limits.
 - c. Chum and Coho Salmon:
 - i. May not be retained and must be returned to the water alive and unharmed.

Information about the Federal Subsistence Management Program may be found on the web at www.doi.gov/subsistence or by visiting www.facebook.com/subsistencealaska.

Missing out on the latest Federal subsistence issues? If you'd like to receive emails and notifications on the Federal Subsistence Management Program you may subscribe for regular updates by emailing fws-fsb-subsistence-request@lists.fws.gov.

-###-



Lower River Fishing and Closure Area

Legend

- Area closed unless opened for gillnet fishing
- Closed to all means and methods for Chinook, Chum, and Coho Salmon
- YDNWR Boundary

Johnson Line North
Degrees Minutes Seconds
Latitude: 60° 39' 25"
Longitude: -162° 6' 7"

Decimal Degrees
Latitude: 60.65704
Longitude: -162.10193

Johnson Line South
Degrees Minutes Seconds
Latitude: 60° 37' 2"
Longitude: -162° 4' 7"

Decimal Degrees
Latitude: 60.61726
Longitude: -162.06855

Refuge Boundary West Bank
Degrees Minutes Seconds
Latitude: 59° 59' 46"
Longitude: -162° 30' 54"

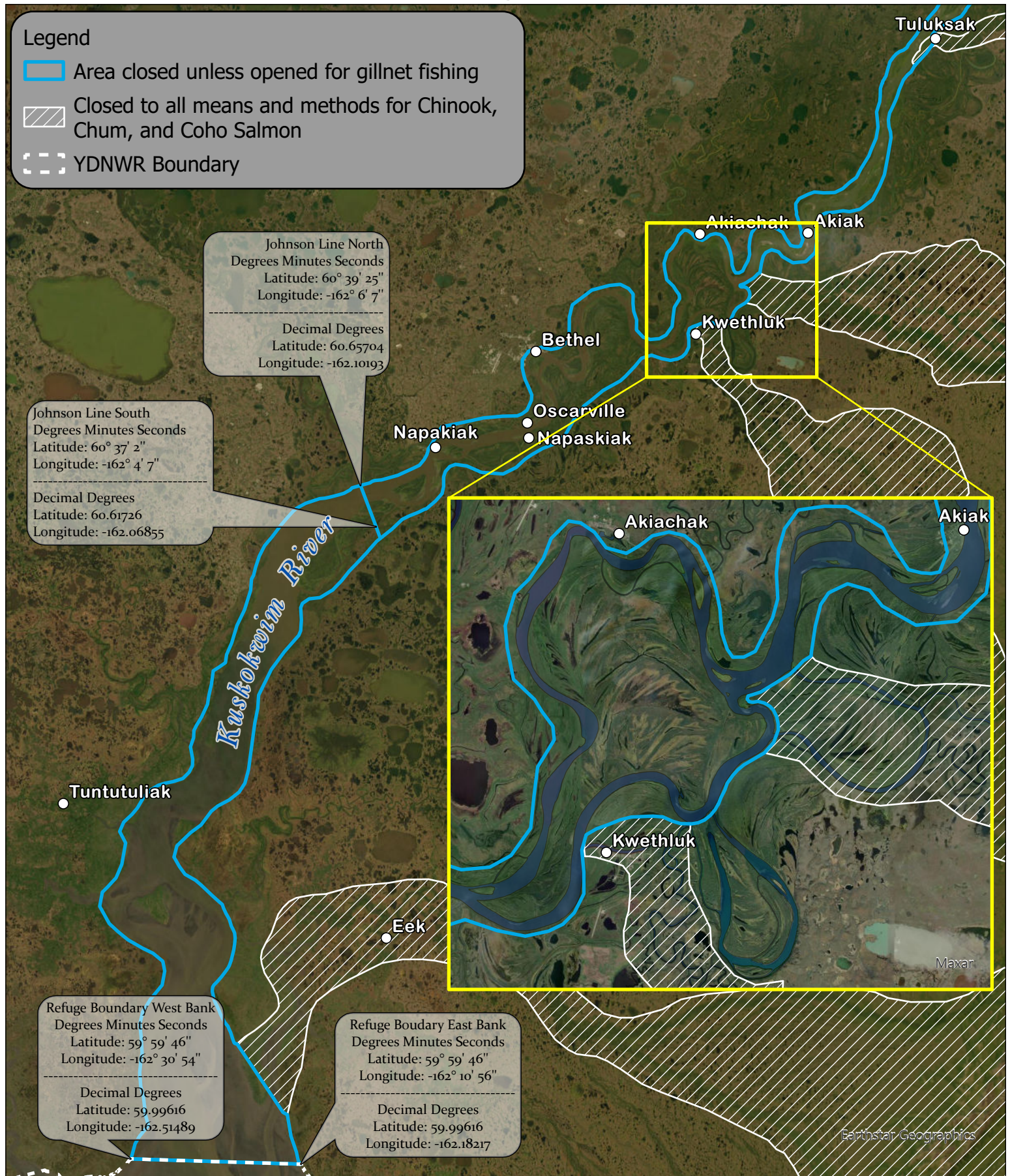
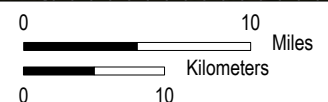
Decimal Degrees
Latitude: 59.99616
Longitude: -162.51489

Refuge Boundary East Bank
Degrees Minutes Seconds
Latitude: 59° 59' 46"
Longitude: -162° 10' 56"

Decimal Degrees
Latitude: 59.99616
Longitude: -162.18217



While the U.S. Fish & Wildlife Service makes every effort to represent the data shown on these maps as completely and accurately as possible, the USFWS gives no warranty, expressed or implied, as to the accuracy, reliability, or completeness of these data. In addition, the USFWS shall not be held liable for improper or incorrect use of the data described and/or contained herein. Graphical representations provided by the use of this data do not represent any legal description of the data herein and are provided only as a general representation of the data. Descriptions presented in special actions supersede any depictions provided in this map.





Middle River Fishing and Closure Area

Legend

- Closed to gillnet fishing unless opened by announcement.
- Area remains open for dip nets, beach seines, fish wheels, and rod and reel.
- Closed to all means and methods for Chinook, Chum, and Coho Salmon.
- YDNWR Boundary
- Aniak Box

Kalskag Line West Bank
Degrees Minutes Seconds
Latitude: 61° 20' 22"
Longitude: -160° 36' 49"

Decimal Degrees
Latitude: 61.33944
Longitude: -160.61363

Kalskag Line East Bank
Degrees Minutes Seconds
Latitude: 61° 20' 18"
Longitude: -160° 35' 44"

Decimal Degrees
Latitude: 61.33833
Longitude: -160.59558

Degrees Minutes Seconds
Latitude: 61° 35' 16"
Longitude: -159° 33' 27"

Decimal Degrees
Latitude: 61.58775
Longitude: -159.55763

Degrees Minutes Seconds
Latitude: 61° 35' 37"
Longitude: -159° 33' 16"

Decimal Degrees
Latitude: 61.59348
Longitude: -159.5544

Degrees Minutes Seconds
Latitude: 61° 34' 57"
Longitude: -159° 31' 3"

Decimal Degrees
Latitude: 61.58259
Longitude: -159.5174

Degrees Minutes Seconds
Latitude: 61° 34' 40"
Longitude: -159° 31' 3"

Decimal Degrees
Latitude: 61.57786
Longitude: -159.5174

Aniak Box



While the U.S. Fish & Wildlife Service makes every effort to represent the data shown on these maps as completely and accurately as possible, the USFWS gives no warranty, expressed or implied, as to the accuracy, reliability, or completeness of these data. In addition, the USFWS shall not be held liable for improper or incorrect use of the data described and/or contained herein. Graphical representations provided by the use of this data do not represent any legal description of the data herein and are provided only as a general representation of the data. Descriptions presented in special actions supersede any depictions provided in this map.

