



Federal Subsistence Board News Release



U.S. Fish and Wildlife Service
Bureau of Land Management
National Park Service
Bureau of Indian Affairs

Forest Service

For Immediate Release:
July 23, 2025

Contact: Spencer Rearden
(907) 621-6129
Spencer_Rearden@fws.gov

Kuskokwim River Mainstem Fishing Opportunities

Pursuant to authority delegated by the Federal Subsistence Board, the Yukon Delta National Wildlife Refuge Manager, as In-Season Manager, hereby announces additional fishing opportunities for **Federally qualified subsistence users only**:

In the Kuskokwim River main stem, from the Refuge boundary at the mouth of the Kuskokwim River to the Kalskag Line (see maps), **drift or set gillnets** will be allowed effective:

Drift/Set Gillnet

- **July 27, 2025 from 7:00 am to July 31, 2025 11:59 pm.**
- **August 5, 2025 from 7:00 am to 7:00 pm (12 hours).**

Gillnets are restricted to 6-inch or less mesh and may not exceed 45 meshes in depth and 50 fathoms (300-feet) in aggregate (total set and drift gillnet) length below the Johnson River and 25 fathoms (150 feet) in aggregate (total set and drift gillnet) length above the Johnson River. All species of salmon may be retained during this opportunity. The salmon bearing tributaries, and the Aniak Box listed in FSA-YD-25-01 will remain closed to all gillnets. When these harvest opportunities expire, Federal public waters of the Kuskokwim River, downstream of the Kalskag line and to the mouth of the Kuskokwim River will return to closed to the use of drift gillnets by all users for the protection of Chinook, Chum and Coho Salmon.

In the Kuskokwim River drainage within the Refuge boundary, including all tributaries and the Aniak box (see maps), **rod and reel fishing with the retention of all salmon** will be allowed effective:

Rod and Reel:

- **July 27, 2025 at 7:00 am until further notice.**

Fishing with gillnets above the Kalskag Line remains open until further notice (details stated in the 2025 Second Announcement released June 18, 2025).

Information about the Federal Subsistence Management Program may be found on the web at www.doi.gov/subsistence or by visiting www.facebook.com/subsistencealaska.

Missing out on the latest Federal subsistence issues? If you'd like to receive emails and notifications on the Federal Subsistence Management Program you may subscribe for regular updates by emailing fws-fsb-subsistence-request@lists.fws.gov.



-###-

1011 East Tudor Road MS-121 • Anchorage, Alaska 99503-6199 • subsistence@fws.gov • (800) 478-1456 / (907) 786-3888
This document has been cleared for public release #151020920



Lower River Fishing and Closure Area

Legend

-  Closed to gillnet fishing unless opened by announcement. Area remains open for dip nets, beach seines, fish wheels, and rod and reel.
-  Closed to all means and methods except for rod and reel fishing for all salmon.

 YDNWR Boundary

Johnson Line North
Degrees Minutes Seconds
Latitude: 60° 39' 25"
Longitude: -162° 6' 7"

Decimal Degrees
Latitude: 60.65704
Longitude: -162.10193

Johnson Line South
Degrees Minutes Seconds
Latitude: 60° 37' 2"
Longitude: -162° 4' 7"

Decimal Degrees
Latitude: 60.61726
Longitude: -162.06855

Refuge Boundary West Bank
Degrees Minutes Seconds
Latitude: 59° 59' 46"
Longitude: -162° 30' 54"

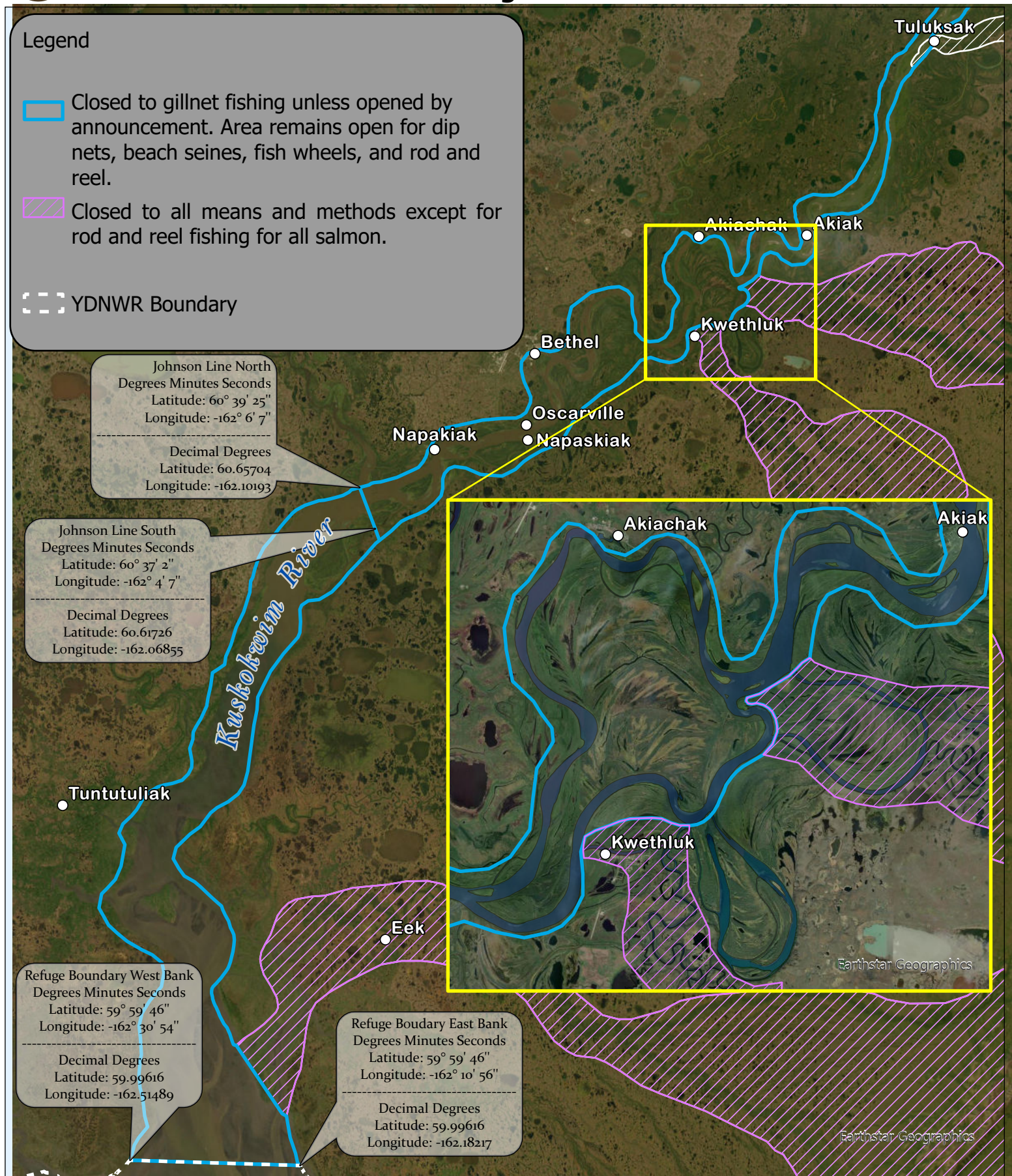
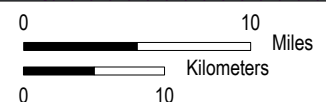
Decimal Degrees
Latitude: 59.99616
Longitude: -162.51489

Refuge Boundary East Bank
Degrees Minutes Seconds
Latitude: 59° 59' 46"
Longitude: -162° 10' 56"

Decimal Degrees
Latitude: 59.99616
Longitude: -162.18217



While the U.S. Fish & Wildlife Service makes every effort to represent the data shown on these maps as completely and accurately as possible, the USFWS gives no warranty, expressed or implied, as to the accuracy, reliability, or completeness of these data. In addition, the USFWS shall not be held liable for improper or incorrect use of the data described and/or contained herein. Graphical representations provided by the use of this data do not represent any legal description of the data herein and are provided only as a general representation of the data. Descriptions presented in special actions supersede any depictions provided in this map.





Middle River Fishing and Closure Area

Legend

- Closed to gillnet fishing unless opened by announcement.
- Area remains open for dip nets, beach seines, fish wheels, and rod and reel.
- Closed to all means and methods except for rod and reel fishing for all salmon.
- YDNWR Boundary
- Aniak Box

Kalskag Line West Bank
Degrees Minutes Seconds
Latitude: 61° 20' 22"
Longitude: -160° 36' 49"

Decimal Degrees
Latitude: 61.33944
Longitude: -160.61363

Kalskag Line East Bank
Degrees Minutes Seconds
Latitude: 61° 20' 18"
Longitude: -160° 35' 44"

Decimal Degrees
Latitude: 61.33833
Longitude: -160.59558

Degrees Minutes Seconds
Latitude: 61° 35' 16"
Longitude: -159° 33' 27"

Decimal Degrees
Latitude: 61.58775
Longitude: -159.55763

Degrees Minutes Seconds
Latitude: 61° 35' 37"
Longitude: -159° 33' 16"

Decimal Degrees
Latitude: 61.59348
Longitude: -159.5544

Degrees Minutes Seconds
Latitude: 61° 34' 57"
Longitude: -159° 31' 3"

Decimal Degrees
Latitude: 61.58259
Longitude: -159.5174

Degrees Minutes Seconds
Latitude: 61° 34' 40"
Longitude: -159° 31' 3"

Decimal Degrees
Latitude: 61.57786
Longitude: -159.5174

Aniak Box



While the U.S. Fish & Wildlife Service makes every effort to represent the data shown on these maps as completely and accurately as possible, the USFWS gives no warranty, expressed or implied, as to the accuracy, reliability, or completeness of these data. In addition, the USFWS shall not be held liable for improper or incorrect use of the data described and/or contained herein. Graphical representations provided by the use of this data do not represent any legal description of the data herein and are provided only as a general representation of the data. Descriptions presented in special actions supersede any depictions provided in this map.

