



# Virginia

## Great American Outdoors Act

## National Parks and Public Land Legacy Restoration Fund

Photo Credit: NPS

**The Great American Outdoors Act National Parks and Public Land Legacy Restoration Fund (GAOA LRF) is a commitment to protecting and sustaining our public lands.**

Established on August 4, 2020, GAOA LRF allocates over \$1.6 billion annually from fiscal years (FY) 2021 through 2025 to the Department of the Interior (Interior) to address priority deferred maintenance and repair needs on public lands and Bureau of Indian Education-funded schools. With all five years of GAOA LRF funding, Interior bureaus will:

- Fund 396 projects across 50 states, the District of Columbia, and multiple territories
- Address nearly \$5.9 billion in deferred maintenance and repair
- Improve the condition of over 3,800 Interior assets

### GAOA LRF Impacts Across America\*



Repairing over **1,000** recreational and visitor experience assets



Improving ADA accessibility in nearly **50%** of GAOA LRF projects



Each year of GAOA LRF funding is estimated to support an average of **17,000** jobs and contribute **\$1.9 billion** to the U.S. economy



Improving facilities used by nearly **2,300** students and faculty at BIE-funded schools each year

### Deferred Maintenance and Repair in Virginia

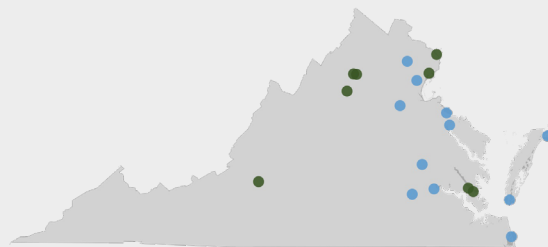
In Virginia, the total deferred maintenance and repair (DM&R) backlog for the four Interior GAOA LRF bureaus is nearly \$1,535,582,000\*\*.

Bureau	DM&R**
Bureau of Indian Education (BIE)	\$0
Bureau of Land Management (BLM)	\$1,323,000
National Park Service (NPS)	\$1,508,544,000
U.S. Fish and Wildlife Service (FWS)	\$25,716,000

### GAOA LRF in Virginia

With the full five years of funding, GAOA LRF will invest over **\$466.4 million** towards improving over **90** assets across **8** projects in Virginia.

As of March 2025, Maintenance Action Teams have completed work at **5** FWS location and **6** NPS location Virginia.



### Assets improved in Virginia:



Transportation Assets



Water Infrastructure and Other Utilities



Recreational and Visitor Experience Assets

● GAOA LRF Projects

● Completed Maintenance Action Team Activities

\*these numbers are estimates and include FY21 - FY25 GAOA LRF-funded projects.

\*\*DM&R estimates represent a point in time, reported as of 9/30/2024, rounded to the nearest thousand. DM&R is calculated based on asset repair needs in FRPP, which does not include assets with a status indicator of Report of Excess Submitted, Report of Excess Accepted, Determination to Dispose, Disposed, Cannot Currently be Disposed, or Surplus.

LEARN MORE AT: [doi.gov/gaoa](https://doi.gov/gaoa)



# FY21-25 Projects, Locations, and Funding in Virginia

Bureau	Unit Name	Project Title	Funding <sup>†</sup> as of Mar. 2025
BLM	Northeastern States District	Meadowood Repairs	\$400,000
NPS	Blue Ridge Parkway	Rehabilitate Sections of Blue Ridge Parkway in Virginia	\$67,801,000
NPS	Colonial National Historical Park	Rehabilitate Sections of the Colonial Parkway	\$128,674,000
NPS	Colonial National Historical Park	Stabilize York River Shoreline	\$11,990,000
NPS	George Washington Memorial Parkway	GWMP North Section Rehabilitation	\$207,800,000
NPS	Shenandoah National Park	Pavement Preservation Along 54 miles of Skyline Drive and 19 overlooks associated with Skyline Drive	\$26,250,000
NPS	Shenandoah National Park	Rehabilitate Headquarters Water System	\$20,000,000
NPS	Shenandoah National Park	Remove Obsolete Structures and Restore Areas to Native Condition	\$3,516,000

<sup>†</sup> Rounded to thousands.

## Meadowood Repairs

### *Northeastern States District*

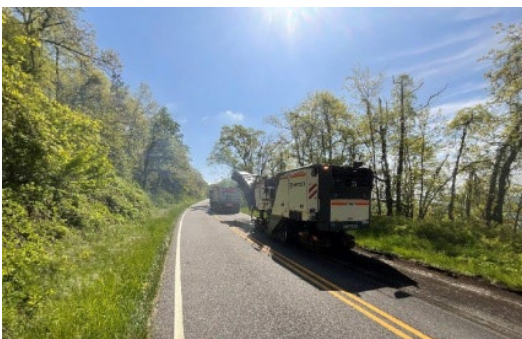


Completed culvert replacement at Meadowood Special Recreation Management Area. Photo Credit: BLM

The Meadowood Special Recreation Management Area offers opportunities for hiking, horseback riding, mountain biking, and enjoying wildlife in 800 acres of forest and meadows just outside of Washington, D.C. This project replaced deteriorated fencing, provided safe boundaries for the public, and protected resources. The project also replaced a deteriorating culvert and removed the former visitor center, which was a significant safety hazard. These repairs improved resource protection and provide safer experiences for visitors and employees.

## Pavement Preservation Along 54 miles of Skyline Drive and 19 overlooks associated with Skyline Drive

### *Shenandoah National Park*



Repairs to Skyline Drive. Photo Credit: NPS

Skyline Drive is a National Historic Landmark that runs 105 miles along the crest of the Blue Ridge Mountains in Shenandoah National Park. The pavement on the road needed repairs to prevent rapid deterioration and destabilization. This project rehabilitated a large segment of Skyline Drive pavement including 19 overlooks. This project provides visitors a safe travel experience while driving or biking for years to come.