

# **Leaving a Legacy: The Great American Outdoors Act National Parks and Public Land Legacy Restoration Fund 2021-2025**



**United States Department of the Interior**





# Table of Contents

<b>Executive Summary</b>	<b>3</b>
GAOA LRF at a Glance	
<b>GAOA LRF Overview</b>	<b>4</b>
History of GAOA LRF	
Celebrating GAOA LRF's Legacy at Interior	
<b>Portfolio Overview</b>	<b>8</b>
Improving Assets Through GAOA LRF	
Deferred Maintenance & Repair	
Project Portfolio	
Maintenance Action Teams	
<b>Executing on Program Goals</b>	<b>14</b>
Program Goals - Overview	
Maximizing Return on Investments and Citizens Served	
Improving Interior's Financial Health	
Protecting Those We Serve	
Planning for the Future	
<b>Bureau Level Impacts</b>	<b>24</b>
Bureau of Indian Education	
Bureau of Land Management	
National Park Service	
U.S. Fish and Wildlife Service	
<b>Conclusion</b>	<b>29</b>
GAOA LRF's Continued Legacy	

*Title Page: Construction scaffolding on the exterior of the Historic Ahwahnee Hotel in Yosemite National Park. Photo Credit: NPS Staff*

*Below: Contractors laying asphalt on a compacted road base along the Moose – Wilson Road in Grand Teton National Park. Photo Credit: NPS*



# Acronyms

**Americans with Disabilities Act (ADA)**

**Architectural Barriers Act (ABA)**

**Bureau of Indian Education (BIE)**

**Bureau of Land Management (BLM)**

**Deferred Maintenance and Repair (DM&R)**

**Facility Condition Index (FCI)**

**Fiscal Year (FY)**

**Great American Outdoors Act (GAOA)**

**Maintenance Action Team (MAT)**

**National Parks and Public Land Legacy Restoration Fund (LRF)**

**National Park Service (NPS)**

**Operations and Maintenance (O&M)**

**United States Department of Agriculture (USDA)**

**United States Department of the Interior (Interior)**

**United States Fish and Wildlife Service (FWS)**

**United States Forest Service (USFS)**

# GAOA LRF at a Glance

The Great American Outdoors Act (GAOA) National Parks and Public Land Legacy Restoration Fund (LRF) (Public Law 116-152) authorizes \$1.6 billion annually to the Department of the Interior (Interior) for fiscal years (FY) 21 – 25 to address priority deferred maintenance and repair (DM&R) needs at public lands managed by the Bureau of Land Management (BLM), the National Park Service (NPS), the U.S. Fish and Wildlife Service (FWS), and at Bureau of Indian Education (BIE)-funded schools throughout the country. This summary highlights GAOA LRF's far reaching impacts across key programmatic areas and goals.



**\$6 Billion**  
in Estimated DM&R  
Addressed



**396 Projects**  
Funded



**3,800+ Assets**  
Improved



**1,020+ Recreation**  
Assets Impacted



**\$1.9 Billion**  
In Annual  
Contributions to  
the U.S. Economy



**\$135 Million**  
Invested in  
Maintenance  
Action Teams



**50% of Projects**  
Improving  
Accessibility



**\$17.4 Million**  
Average Project Size  
*As of FY25 Project Enactment*



**17,000 Jobs**  
Supported  
Annually



**\$622 Million**  
In Earnings on  
Investment  
*As of 3/31/25*



Replacement of the Laurel Fork Bridge in progress at Blue Ridge Parkway.  
Photo Credit: NPS

# GAOA LRF Overview



## History of GAOA LRF



*Jefferson Memorial restoration in progress at National Mall and Memorial Parks. Photo Credit: NPS*

From the ancient beauty of the Great Smoky Mountains to the geological wonders of the Grand Canyon, public lands are among our Nation's most prized treasures. Each year, hundreds of millions of people visit our public lands to marvel at the landscapes, enjoy recreation opportunities, and learn about our country's history.

Interior manages 480 million acres of public land across more than 2,400 locations. Interior protects and manages these lands for current and future generations – an immense responsibility requiring continual investment to maintain and protect trails, campgrounds, historic monuments, and other critical infrastructure.

Interior is also the primary federal agency charged with upholding the United States' trust responsibility to federally recognized American Indian and Alaska Native tribes. As part of this responsibility, Interior helps administer BIE-funded schools, which aim to provide students with culturally relevant and high-quality education. Infrastructure on BIE campuses — including classrooms, staff and student dormitories, administrative facilities, parking lots, sports fields, and other academic structures — require routine maintenance to remain safe, operational, and functional for staff and students. Providing BIE students with fully functioning schools helps foster an educational environment that is conducive to student growth and development.

Interior's infrastructure is not immune to aging, and without ongoing sufficient resources, many assets have fallen into disrepair as maintenance costs increase and DM&R needs compound. Over the last several decades, DM&R has grown beyond what can be addressed within current annual discretionary funding levels.

History of GAOA LRF

Recognizing the growing DM&R needs, bipartisan leaders in Congress came together to introduce legislation to begin addressing the challenges facing our public lands infrastructure. On August 4th, 2020, President Donald J. Trump signed GAOA into law. GAOA established the LRF, authorizing \$1.9 billion annually from FY21-25, derived from 50% of all energy development revenues on federal lands and waters. GAOA LRF is used to fund projects that address priority DM&R at four Interior bureaus and one agency within the U.S. Department of Agriculture (USDA). These bureaus include BIE, BLM, NPS, FWS, and the USDA's U.S. Forest Service (USFS).

GAOA LRF Funding by Bureau

Bureau	Total GAOA LRF Funding Across All Five Years	Percent of Total GAOA LRF Funding
BIE	\$475 Million	5%
BLM	\$475 Million	5%
FWS	\$475 Million	5%
NPS	\$6.65 Billion	70%
USFS	\$1.43 Billion	15%

Figure 1: Table showing the distribution of LRF funding across bureaus

Figure 2: Timeline noting GAOA-LRF related events



\* Each year following FY21, GAOA LRF has submitted projects to Congress in the President's Budget



Celebrating GAOA LRF’s Legacy at Interior



From left to right: Photo Credit 1: NPS; Photo Credit 2: FWS; Photo Credit 3: USFWS; Photo Credit 4: FWS

**Interior’s Mission:** To protect and manage the Nation’s natural resources and cultural heritage; provide scientific and other information about those resources; and honor its trust responsibilities or specific commitments to American Indians, Alaska natives, Native Hawaiians, and affiliated Island Communities.

GAOA LRF serves public land visitors, employees, and volunteers by repairing the infrastructure they rely on to safely execute Interior’s mission. In its first five years, GAOA LRF has funded 396 priority deferred maintenance projects across 50 states, the District of Columbia, and 5 U.S. territories. These projects are expected to address nearly \$6 billion in DM&R upon completion.

GAOA LRF has also been an important economic engine for local communities and industries, providing job opportunities and supporting local businesses. GAOA LRF projects support approximately 17,000 jobs annually, contributing to economic growth. In addition to job creation, Interior’s \$1.6 billion share of GAOA LRF contributes an average of \$1.9 billion to the U.S. economy each year. These investments keep public lands open, accessible, safe, and functional, improving the overall visitor experience and promoting economic activity in surrounding communities. Investments throughout GAOA LRF’s five years of program implementation have also made a significant and lasting impact on Interior’s ability to deliver its mission by increasing access to outdoor recreation, restoring historical and cultural landmarks, supporting wildlife populations and natural resources, improving visitor educational assets, investing in public land stewards, and providing a positive educational environment.

**\$ 6B**  
In Estimated  
DM&R to be  
Addressed

**17,000**  
Jobs Supported  
Annually

**\$1.9B**  
In Average Annual  
Contributions  
to GDP

**396**  
Projects  
Funded

**3,800+**  
Assets  
Improved

**\$622M**  
Earnings on  
Investments\*

\*As of 3/31/25

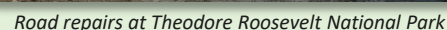


# Portfolio Overview






\*\*The current replacement value of the real property asset portfolio of the four GAOA bureaus as reported in the FY24 Federal Real Property Portfolio.

# \$8.1 Billion

Invested in Repairing,  
Replacing, or  
Demolishing Assets



Improving Assets Through GAOA LRF

Interior’s GAOA LRF investments span a variety of asset types. These assets can be grouped into seven broad asset use categories, defined below.			Assets Repaired, Replaced, or Disposed:
	<b>Recreational and Visitor Experience Assets:</b> Assets that serve a recreational function, including campgrounds, visitor lodging, trails and boardwalks, scenic railways, visitor and education centers, monuments, museums, and historic structures and buildings.		1,020+
	<b>Transportation Assets:</b> Assets that support transportation including paved and unpaved roads, bridges, parking lots, and tunnels.		920+
	<b>Operational Buildings:</b> Buildings that support operations and mission functions, such as offices, warehouses, maintenance shops, barns, and fire stations.		490+
	<b>Water Infrastructure and Other Utility Assets:</b> Structures including dams and levees; drinking water and wastewater systems; and communications, power, and other essential utility infrastructure (excluding transportation assets).		490+
	<b>Housing Assets:</b> Employee Housing Program assets including residential structures, barracks, dormitories, and related support buildings (e.g., detached garages and laundry buildings).		430+
	<b>All Other Assets:</b> Assets that do not fit into another asset use category but support mission delivery.		60+
	<b>BIE Schools and Related Assets:</b> BIE schools and other BIE assets fundamental to school operations, such as educational buildings.		40+

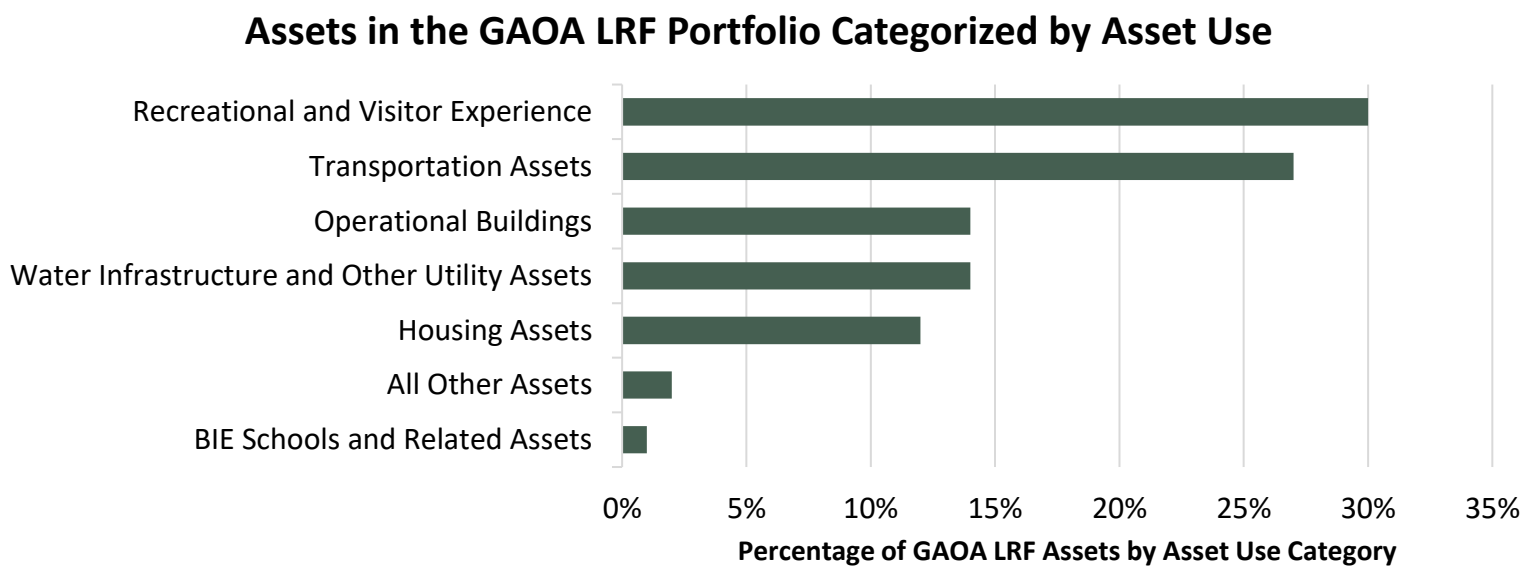


Figure 3: Breakdown of GAOA LRF assets by asset use category



Deferred Maintenance and Repair

Examples of Deferred Maintenance & Repair Needs



Whitehouse Road Improvement Project, Color County and Paria River District. Photo Credit: BLM



Broken pipe in the Furnace Creek water system, Death Valley National Park. Photo Credit: NPS



Mammoth Cave Hotel water damage, Mammoth Cave National Park. Photo Credit: NPS



Lake Road boat dock, Big Branch Marsh National Wildlife Refuge. Photo Credit: USFWS MAT

Cumulative Anticipated DM&R Roll-Off (FY21-25 Projects)

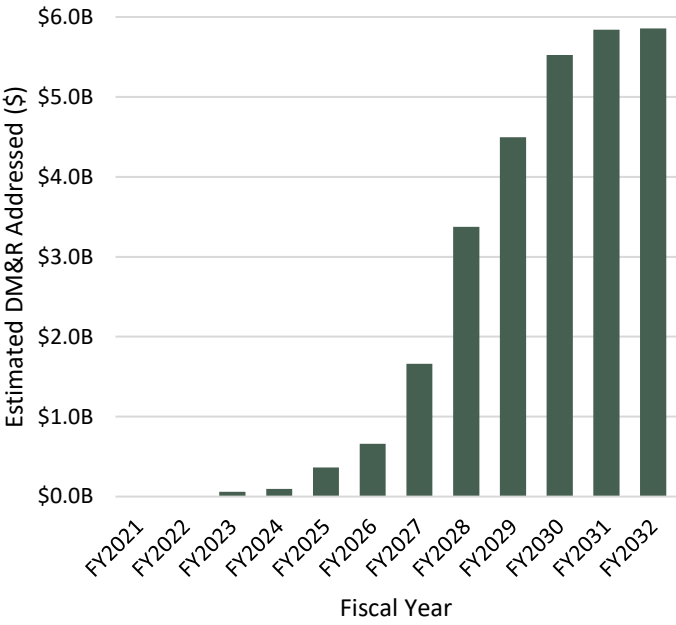


Figure 4: Chart of the anticipated roll off of Interior’s deferred maintenance and repair

DM&R is defined as a maintenance and repair activity that was not performed when it should have been or was scheduled to be performed but was delayed to a future period.\* While there are multiple factors that contribute to deferred maintenance, the largest driver is decades of insufficient resources and annual appropriations to perform preventative and recurring maintenance. As a result, Interior’s assets deteriorate or perform in a reduced condition beyond their intended lifecycle.

The primary criterion for selecting GAOA LRF projects is maximizing the ability to address priority DM&R. Projects funded within the first five years of GAOA LRF are expected to address nearly \$6 billion of DM&R once completed. Interior is now starting to see the impacts of GAOA LRF as large, multi-year projects reach completion, assets are improved, and DM&R is addressed.

\*As defined by the Federal Accounting Standards Advisory Board.



Photo Credit: Al Nash



Photo Credit: Zack Morgan

Carbella Boat Ramp



Photo Credit: NPS



Photo Credit: NPS

Replace Mammoth Cave Hotel Roof

Project Portfolio

Due to GAOA LRF funding, bureaus can address priority DM&R needs across Interior’s expansive asset portfolio by investing in projects that repair, replace, or demolish deteriorating infrastructure on public lands and at BIE-funded schools. Out of the 396 FY21-25 GAOA LRF projects, the average project size is \$17.4 million, with nearly one quarter of these projects exceeding \$25 million (as of March 2025). GAOA LRF allows Interior to make these large-scale, generational investments, which would normally be out of reach for bureaus within annual appropriations funding.

Throughout a GAOA LRF project’s lifecycle, the project moves through six major phases: Planning, Design, Procurement, Construction, Substantially Complete, and Complete. Each phase is described below.

Some GAOA LRF projects contain multiple components that may be completed in staggered or combined phases; however, for ease of reporting, each project is assigned to a single phase at any time.

Major Project Phases of GAOA LRF Projects

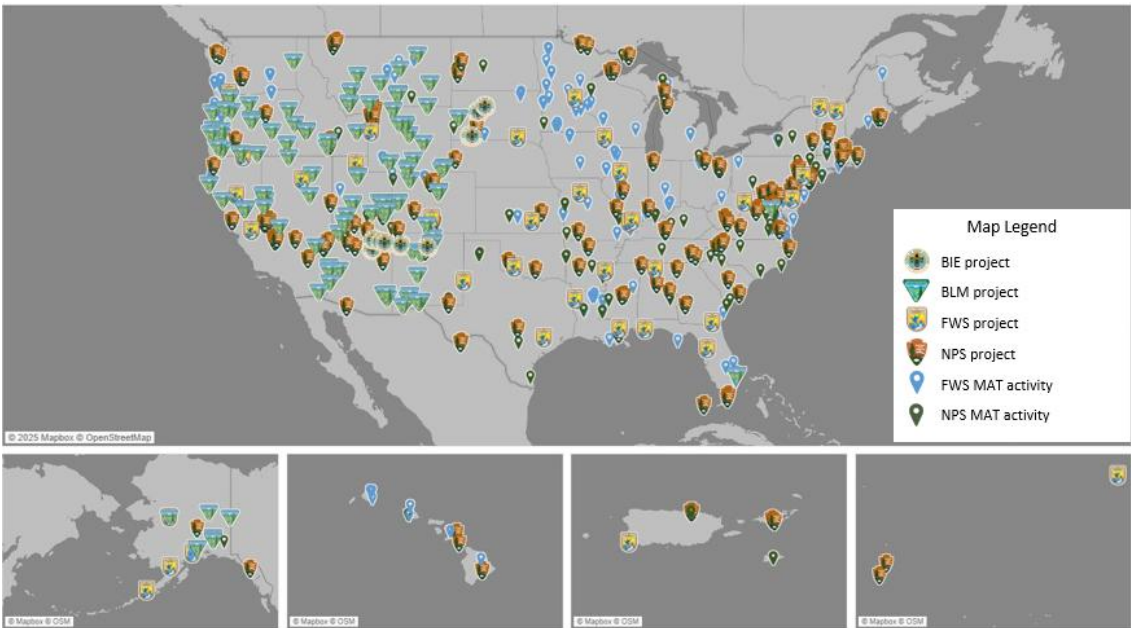
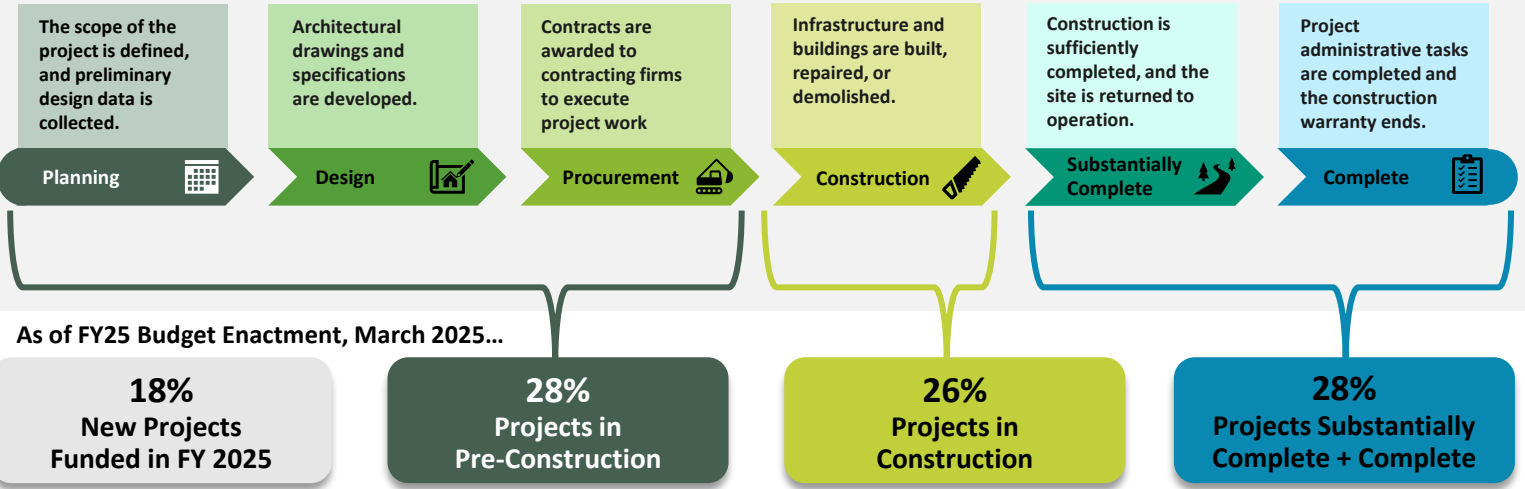


Figure 5: Map of GAOA LRF Projects and completed MAT activity locations by bureau



Maintenance Action Teams



Funded through GAOA LRF, MATs are teams of in-house tradespeople who can quickly mobilize to perform critical DM&R work at FWS and NPS sites across the country. Team members train in various trades, including heavy equipment operation, electrical, plumbing, carpentry, masonry, and historic preservation. As of March 2025, MATs have completed project work at more than 200 unique public lands sites.

GAOA LRF-funded MATs help to broaden both the scope and benefits of GAOA LRF project work by taking on smaller repair needs. MATs are nimble and can rapidly deploy to respond to maintenance needs while also teaching routine maintenance and repair skills to a new generation of tradespeople and public land stewards. Many MAT projects at the NPS involve volunteers and Youth Service Corps members, inspiring and developing the next generation of maintenance professionals . Through hands-on training, MAT workers learn the foundation of a trade to prepare them for a future career in the field, developing a capable maintenance workforce.



Figure 6: Map of completed MAT activities by bureau

200+ Locations where MATs Completed DM&R-Reducing Activities

\$135 Million Investment in MAT Activities



# Executing on Program Goals

## Program Goals – Overview

After GAOA LRF's passage in 2020, Interior established the GAOA Coordination and Implementation Task Force to develop strategic goals to maximize the program's impact. The Task Force identified the following four Interior-wide goals to guide program implementation and impact. These goals continue to serve as the foundation for the LRF program:

### Maximizing Returns on Investment and Citizens Served

GAOA LRF maximizes the impact of limited funds by identifying and addressing DM&R needs associated with high visitation sites. The program aims to expand public access across national parks, national wildlife refuges, and recreation areas. GAOA LRF projects increase recreational opportunities and improve accessibility for all visitors.

### Improving Interior's Financial Health

GAOA LRF works to improve Interior's overall financial health by addressing priority DM&R, leveraging partnership opportunities, reducing sites' annual operating costs, and right-sizing Interior's asset portfolio through consolidation or demolition of nonessential assets.

### Protecting Those We Serve

GAOA LRF funds projects that address safety risks and improve conditions for visitors, volunteers, and Interior's workforce. GAOA LRF projects leave behind safer facilities and experiences for all who enjoy or work on public lands or spend time at BIE-funded schools.

### Planning for the Future

GAOA LRF's projects prepare Interior for sustained mission delivery, modernizing infrastructure to serve the public for generations to come. GAOA LRF projects provide essential upgrades or replace aging infrastructure to handle increasing visitation, comply with current code requirements, and prepare for evolving environmental conditions.

## Maximizing Returns on Investment and Citizens Served

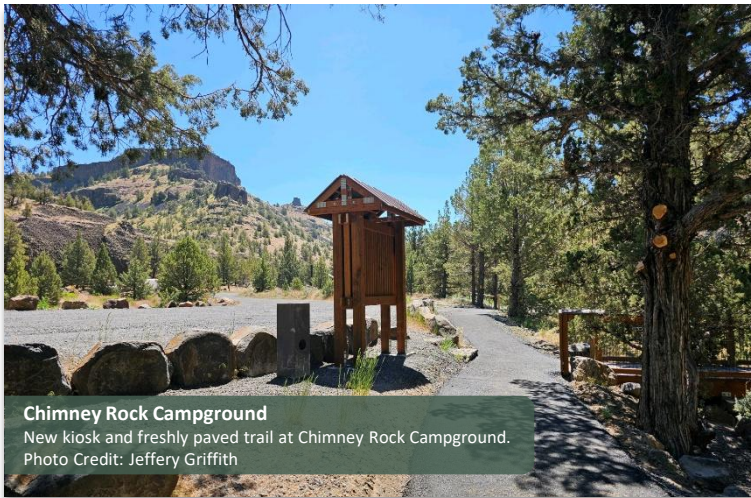
**\$5B**

**Invested in High Visitation Sites**

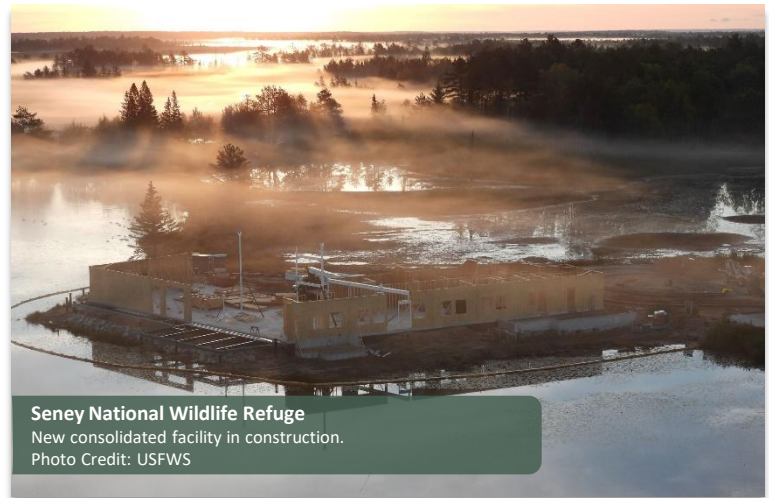
As public land visitation continues to rise, assets at these locations see more wear and tear, resulting in higher DM&R needs across America's most popular public lands. The GAOA LRF program strategically prioritizes project work at sites and in facilities where GAOA LRF will make the most impact on the public, investing over \$5 billion in projects at sites with highest visitation and public use.

The program aims to expand public recreation access across national parks, national wildlife refuges, and recreation areas. Hiking, hunting, biking, rafting, and fishing are just some of the expansive recreation opportunities our public lands offer visitors. GAOA LRF is restoring over 1,020 recreation assets such as trails, boat ramps, hunting blinds, and wildlife viewing platforms to keep recreation activities accessible and available to the public.

**1,020+**  
**Recreational Assets**  
**Funded by GAOA LRF**



**Chimney Rock Campground**  
New kiosk and freshly paved trail at Chimney Rock Campground.  
Photo Credit: Jeffery Griffith



**Seney National Wildlife Refuge**  
New consolidated facility in construction.  
Photo Credit: USFWS

**50%**

**Of Projects Increasing**  
**ADA & ABA Accessibility**

Interior strives to provide the opportunity and access for all Americans to enjoy public lands. While all GAOA LRF projects are designed to meet applicable codes including accessibility standards, nearly 50% of GAOA LRF projects include a specific component that increases Americans with Disabilities Act (ADA) or Architectural Barriers Act (ABA) accessibility. From installing wheelchair accessible ramps, to repaving trails, parking lots, and sidewalks, GAOA LRF projects help make public lands accessible to all visitors, volunteers, and employees.

GAOA LRF maximizes program impact by addressing DM&R on assets which have received a "Poor" Facility Condition Index (FCI) rating. Poor FCI ratings mean that assets have an elevated risk of failing or have already failed, are reaching or are past their intended lifecycle usage, or present a considerable threat to public safety and have been taken out of service. In order for bureaus to shift toward a sustainable asset management strategy that keeps assets in good condition, GAOA LRF investments first must help restore these assets to that desired condition.

**Improving**  
**Assets**



## Maximizing Return on Investment and Citizens Served – Project Spotlights

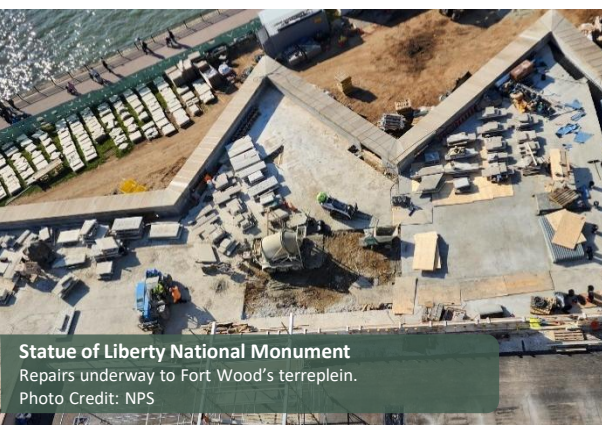


**Kenai National Wildlife Refuge**  
Refuge parking area and road repairs in progress.  
Photo Credit: PND Engineers, Inc.

### Modernize Outdoor Recreational Facilities and Address Public Safety Issues

#### *Kenai National Wildlife Refuge, Alaska*

Kenai National Wildlife Refuge, called “Alaska in miniature,” is world-renowned for its unique ecosystems, including ice fields, glaciers, tundra, forests, and coastal wetlands. This project is rehabilitating outdoor recreation facilities including cabins, trails, outdoor education facilities, fishing platforms, and boat launches to enrich the visitor experience, encourage engagement with nature, and enhance ADA accessibility. The project is also repairing transportation assets such as roads and parking areas, which provide access to hunting and fishing opportunities at the refuge.

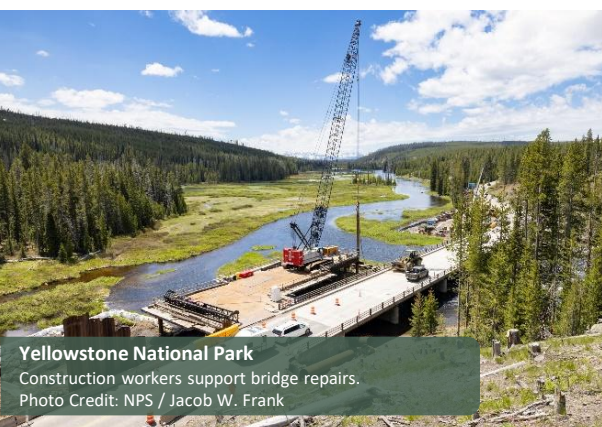


**Statue of Liberty National Monument**  
Repairs underway to Fort Wood's terreplein.  
Photo Credit: NPS

### Rehabilitate Terreplein and Related Levels at Fort Wood

#### *Statue of Liberty National Monument, New York*

The Statue of Liberty National Monument located in New York Harbor is an iconic symbol of American freedom and history and served as the gateway for over 12 million immigrants. Fort Wood, the base of the Statue of Liberty, is an eleven-pointed, star-shaped defensive fort built between 1808 and 1811. This project addresses ongoing deterioration and provides long-term protection to the terreplein and vertical surfaces of the historic Fort Wood. Work includes waterproofing the exterior levels of Fort Wood; preventing water infiltration; and replacing the walking surface to improve drainage and accessibility to heavily visited areas.



**Yellowstone National Park**  
Construction workers support bridge repairs.  
Photo Credit: NPS / Jacob W. Frank

### Replace the Lewis River Bridge

#### *Yellowstone National Park, Wyoming*

Yellowstone National Park was established in 1872 as the Nation's first National Park. The Lewis River Bridge is a 1960s continuous steel multi-beam bridge near the park's south entrance. This project removes the structurally deficient Lewis River Bridge, which was in poor condition, and replaces it with a new bridge to preserve safe visitor access between the South Entrance and West Thumb. Parking areas, overlooks, and walkways will be updated and reconfigured to reduce traffic hazards and improve accessibility for visitors.



**Red River National Wildlife Refuge**  
Repairs to a refuge boardwalk in progress.  
Photo Credit: USFWS

### Replace Primary Boardwalk and Trail Bridge

#### *Red River National Wildlife Refuge, Louisiana*

The Red River National Wildlife Refuge offers a large Visitor and Education Center and wildlife-based recreation including hunting, fishing, birdwatching, hiking, and paddling. This project replaced the main boardwalk and pedestrian trail bridge after significant flood damage and erosion on the banks of Lake Caroline exposed the footing of the boardwalk, negatively impacting safety. The new boardwalk will maintain safe public access.

Improving Interior’s Financial Health

GAOA LRF was established to address DM&R on public lands and at BIE-funded schools, which is why the amount of DM&R is the most important factor bureaus consider when selecting which projects receive funding. As a result, bureaus are putting GAOA LRF to work and addressing a significant amount of DM&R across Interior’s portfolio.

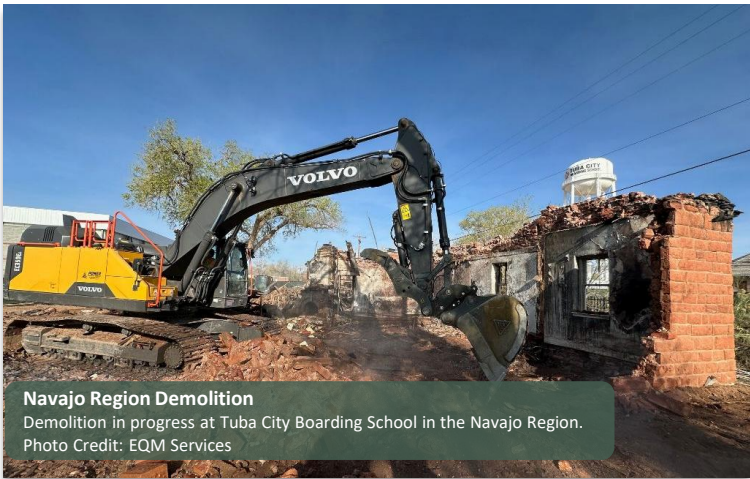
Addressing DM&R is the Primary Selection Criterion for GAOA LRF Projects

GAOA LRF Pursues Leveraging Opportunities for Responsible Stewardship of Program Funding

GAOA LRF’s commitment to improving Interior’s financial health includes pairing GAOA LRF project funding, where possible, with revenue sources from partnerships and philanthropic opportunities. These leveraging opportunities encompass many different types of partnerships, whether it is a volunteer or community group donating their time to support a project’s execution or a partner organization or private firm raising additional funds for complimentary project components.

Occasionally, assets managed by bureaus become unsafe, detract from the visitor experience, or are more expensive to repair than they are to replace. In these cases, bureaus may use GAOA LRF funding to divest or demolish, and replace the assets, rather than invest in repairing facilities or structures that are beyond their useful lifecycle. Bureaus are helping Interior right-size asset portfolios by consolidating, replacing, divesting, or disposing of over 720 assets. By removing assets that no longer align with mission needs, Interior bureaus are taking important steps to reduce the cost of future maintenance and repair work while improving safety.

3,800+ Assets Repaired, Replaced, or Disposed



Assets Repaired, Demolished, or Replaced

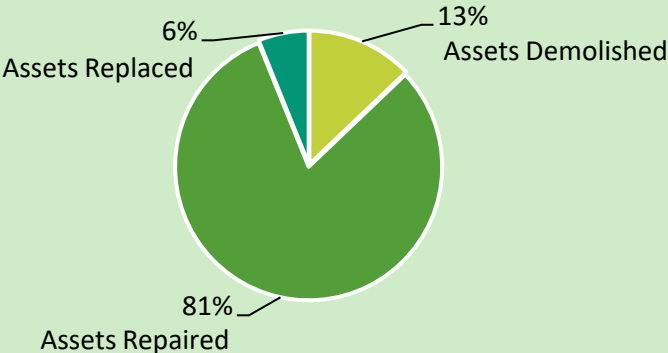


Figure 7: GAOA LRF project assets by treatment

GAOA LRF Projects Consolidate Assets to Reduce Future Operations and Maintenance Costs

Assets often become more inefficient and expensive to maintain as they age due to obsolete components or deterioration. GAOA LRF projects that are replacing or consolidating assets can result in reduced annual operating and maintenance costs for some assets. For example, rather than having multiple, geographically dispersed aging facilities, some GAOA LRF projects remove the deteriorated buildings and replace them with a more efficient single, consolidated, and multipurpose facility. This helps support the long-term sustainability of Interior’s asset portfolio.



## Improving Interior's Financial Health – Project Spotlights

### Rehabilitate the Interior and Exterior of First Bank

*Independence National Historical Park, Pennsylvania*

Located in Philadelphia, the First Bank of the United States is the site of the first national bank established after securing America's Independence. This project is restoring the exterior and improving the interior of the First Bank of the United States, including replacing roofing; repairing and stabilizing masonry; and modernizing mechanical, electrical, and fire safety systems. Alongside GAOA LRF improvements, the park's philanthropic partner, Independence Historical Trust, raised \$4.5M to help support the installation of interactive and immersive exhibits, allowing it to reopen to the public in time for the 250th anniversary of American Independence.



**Independence National Historical Park**  
First Bank of the United States at Independence National Historical Park. Photo Credit: NPS

### Modernize Public Use Facilities, Repair Seismic Issues and Improve Recreational Access – Phase I

*Crab Orchard National Wildlife Refuge, Illinois*

Crab Orchard National Wildlife Refuge, located in Illinois, spans nearly 44,000 acres of varied habitats and offers recreation including hiking, hunting, and camping. This project repairs waterlines and sewer lines, replaces the visitor center, addresses seismic deficiencies in a building, demolishes excess facilities, and modernizes campgrounds and outdoor recreation facilities. After this project's completion, the refuge will transfer ownership of its improved water infrastructure to the city, removing the operational responsibility and cost of ongoing maintenance.

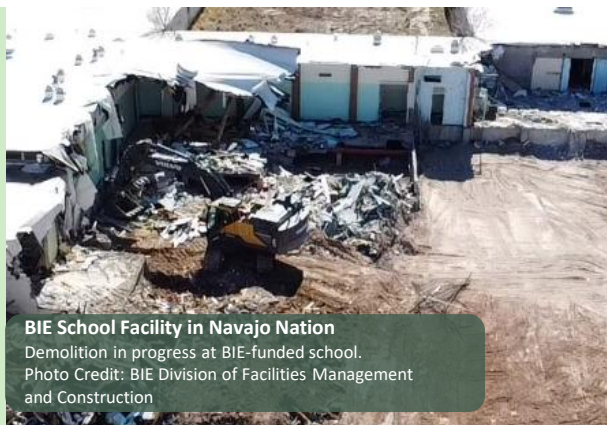


**Crab Orchard National Wildlife Refuge**  
Refuge parking area and road repairs in progress. Photo Credit: Kristin Murphy

### Navajo – Education Demolition Project A

*Navajo Nation, Arizona / New Mexico*

This project occurred at multiple schools and locations in Arizona and New Mexico. Unsafe and out-of-use buildings at schools pose safety hazards, contribute to energy inefficiencies, and diminish the learning environment for students. This project demolished excess education buildings at five schools in the Navajo region to improve the learning environment for students while removing liabilities.



**BIE School Facility in Navajo Nation**  
Demolition in progress at BIE-funded school. Photo Credit: BIE Division of Facilities Management and Construction

### Consolidate and Modernize Maintenance and Habitat Infrastructure

*Attwater Prairie National Wildlife Refuge, Texas*

The Attwater Prairie Chicken National Wildlife Refuge spans 10,541 acres of habitat to protect one of the most endangered birds in North America—Attwater's Prairie-Chicken. This project replaced the aged and insufficient facilities and consolidated them into a new administrative and visitor facility and a multipurpose maintenance building. These improvements will enable the refuge to properly manage its grasslands and provide interpretive and environmental education for the public.



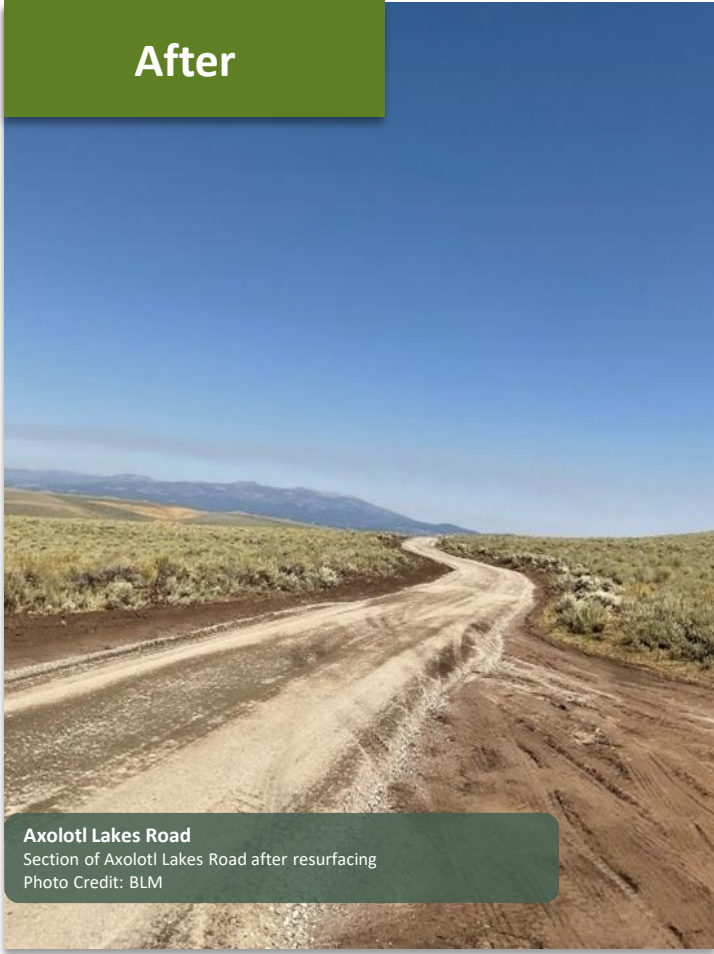
**Attwater Prairie National Wildlife Refuge**  
Completed administrative and visitor center. Photo Credit: FWS



Protecting Those We Serve

GAOA LRF Protects  
Public Lands  
Employees and  
Volunteers

GAOA LRF projects aim to provide safe working conditions for employees by repairing and maintaining staff housing, improving office and maintenance facilities, and removing health and safety concerns. Employees need safe places to work to do their jobs well, and GAOA LRF projects repair, rehabilitate, and modernize the infrastructure staff rely on to execute their bureaus’ missions. Project work also repairs infrastructure essential to safe operating conditions for emergency responders, including roads, telecommunications infrastructure, and fire stations. Improving assets on our public lands is critical to our ability to retain staff and allow them to focus on the mission critical work at sites and BIE-funded schools across the country.



GAOA LRF projects address safety issues that pose threats to people accessing public lands and BIE-funded schools. When aging, outdated infrastructure like roads, buildings, or recreation assets continue to deteriorate, there may be structural concerns; health hazards like lead, asbestos, or mold may be present; or unattractive nuisances may detract from visitor experiences. Due to GAOA LRF projects, bureaus can resolve these issues and help ensure these sites are safe and comfortable for all.

Provides Funding to  
Promote Safety  
For Employees,  
Volunteers, and Visitors

## Protecting Those We Serve



**Grand Teton National Park**  
Repairs to the headquarters buildings during construction.  
Photo Credit: NPS

### Correct Roof and Building Failures at HQ/Maintenance/Dispatch Complex

*Grand Teton National Park, Wyoming*

Grand Teton National Park in Wyoming features landscapes of mountains, valleys, lakes, rivers, and abundant forests that support wildlife populations and provide recreation opportunities for visitors. The Park Headquarters Complex, which provides administrative facilities for park employees and the Teton Interagency Dispatch Center, experienced roof leaks that allowed water infiltration and occasionally forced the park to relocate personnel and functions. This project repaired the roof, improving health and safety for staff so they can continue to support important park functions.



**Burns Junction Fire Station**  
Fire station repairs in progress.  
Photo Credit: Cavanaugh Soules/BLM

### Burns Junction Fire Station Repair and Renovation

*Burns Junction Fire Station, Oregon*

BLM's Fire program is a leader in the Nation's management of wildland fire. The program conducts a broad range of actions to protect the public, natural landscapes, wildlife habitat, recreation areas, and resources. The Burns Junction Fire Station in Oregon required updates to meet the national standard for fire barracks for the firefighters who utilize the facilities. This project renovated the bathrooms, sleeping quarters, kitchen, and laundry facilities at the station to improve living conditions and morale of the three fire engine crews stationed there.



**Wichita Mountains Wildlife Refuge**  
New administrative building at Wichita Mountains National Wildlife Refuge. Photo Credit: Rosemarie Spano

### Consolidate and Modernize Public Use Facilities and Improve Recreational Access — Phase I

*Wichita Mountains Wildlife Refuge, Oklahoma*

Wichita Mountains Wildlife Refuge is known for its roaming herds of bison, longhorn, and Rocky Mountain elk, and offers recreation opportunities including fishing, bird watching, hiking, and camping. This project constructed new administrative headquarters, a multipurpose maintenance and fire cache building, and a bunkhouse to replace multiple inefficient, geographically dispersed facilities. This new space provides a centrally located office and meeting space for employees, while addressing health and safety concerns for staff.



**Grand Junction Air Center**  
Airplane with tanker loading area in the background.  
Photo Credit: Adam Goeden/BLM

### Grand Junction Air Center Repairs, Phase I

*Grand Junction Air Center, Colorado*

The Grand Junction Air Center complex is a multipurpose wildland fire management and operation center that plays a critical role in national wildland fire support. This project is replacing multiple structurally deficient, hazardous, and unsafe buildings with a single, cost-effective building. This project also includes structural repairs to the tanker base concrete apron to bring it into compliance with Federal Aviation Administration requirements. Completed repairs will help support national wildland fire operations and keep operations staff at the site safe.



Planning for the Future

Many GAOA LRF projects repair, restore, or replace aging infrastructure and assets that have exceeded their intended lifecycles. Some projects are modernizing backbone infrastructure and extending the lifespan of assets by replacing outdated systems with code compliant infrastructure, such as modern heating, ventilation, air conditioning, electric, and water and wastewater treatment systems. GAOA LRF projects are also strengthening our public lands against future degradation by reducing erosion, stabilizing shorelines, or preventing flood damage.

GAOA LRF Projects  
Prepare  
Aging Infrastructure  
for the Future





## Planning for the Future – Project Spotlights

### Replace Maintenance Facilities at McFarland Hill Headquarters

*Acadia National Park, Maine*

Acadia National Park in Maine preserves the stunning natural beauty of the highest rocky headlands on the Atlantic coast. This project is constructing a new modernized maintenance operations facility and demolishing the existing facilities, which are significantly undersized; do not meet fire, accessibility, or code requirements; and pose a safety threat to employees. The project is also demolishing more than 20,000 square feet of unsafe structures and returning the sites to their natural conditions. The new maintenance facility will equip the park with workshops, equipment storage, meeting rooms, and offices – meeting park needs for years to come.



**Acadia National Park**

New headquarters facilities construction in progress.  
Photo Credit: NPS

### Many Farms High School

*Many Farms High School, Arizona*

Many Farms High School, located in the heart of the Navajo Nation in Arizona, serves students in grades 9-12. This project is consolidating current education programs housed in multiple buildings on the campus into a single, energy-efficient facility and creating a safe and positive environment conducive to learning. The project is also improving security systems, installing new perimeter fencing, expanding parking, and improving accessibility.



**Many Farms High School**

Students and staff celebrate groundbreaking of the campus renovation project. Photo Credit: BIA DFMC

### Rehabilitate Seawalls and Shoreline Landscape — Phase I

*National Mall and Memorial Parks, Washington, D.C.*

The iconic Tidal Basin reservoir in Washington, D.C. is most famous for the breathtaking cherry blossoms that emerge each spring and the nearby monuments, including the Jefferson Memorial. The sidewalks are deteriorating and sinking, often requiring that NPS close sections to the public due to flooding. This project is rehabilitating the most critical portions of the seawalls and shoreline landscape around the Tidal Basin, including portions around the inlet bridge, and a portion of the West Potomac Park seawall used as foundations for sidewalks, using historic stone masonry where feasible. The project helps ensure the long-term stability and resiliency of the Tidal Basin.



**National Mall and Memorial Parks**

Rehabilitation of the seawall at Tidal Basin.  
Photo Credit: NPS

### Jupiter Inlet Shore Stabilization

*Jupiter Inlet Outstanding Natural Area, Florida*

Jupiter Inlet Lighthouse Outstanding Natural Area in Florida is home to a remarkable array of natural, cultural, and historic resources for visitors. The shoreline is collapsing into the inlet, causing trees to fall into the water and creating boating hazards. In collaboration with the Florida Inland Navigation District, BLM is repairing and stabilizing Jupiter Inlet's shoreline to protect the navigability of the Intercoastal Waterway around the iconic lighthouse and surrounding public lands. The project will add engineered and living shoreline features to reduce erosion, while providing recreational access and habitat enhancement.



**Jupiter Inlet Outstanding Natural Area**

Repairs to the shoreline in progress.  
Photo Credit: BLM

## Bureau Level Impacts



Design rendering of new Many Farms High School campus.  
Photo Credit: Seven Generations Architecture + Engineering

BIE receives 5%, or \$95 million, of GAOA LRF funding each year for a total of \$475 million across all five years. At BIE-funded schools, GAOA LRF is funding projects that are demolishing unused and outdated facilities; replacing school campuses with modern, safe facilities; and improving housing for staff. These projects will improve learning environments for students, teachers, and staff at BIE-funded schools.



**380+ Assets**  
Improved



**\$475 Million**  
GAOA LRF Funding



**\$148 Million**  
Estimated DM&R  
Addressed



**12**  
Projects

### Largest Funded BIE Project

BIE's largest funded project is at Many Farms High School in Arizona, where the bureau is investing over \$230 million in investments to replace the high school campus and facilities to reduce long-term operating costs, improve safety for students and staff, and enhance accessibility. With GAOA LRF funding in place, this project will improve student learning and access to safe learning facilities.

### 2,200+ Students & Faculty Impacted

GAOA LRF projects create positive educational experiences for over 2,200 BIE students and faculty annually by providing safe and modern facilities that are conducive to student learning.

### 190+ Assets Demolished or Replaced

GAOA LRF funding is supporting the demolition or replacement of 190 assets on BIE-funded school campuses to modernize facilities for thousands of students and staff in Tribal communities.

### 26 BIE-Schools Receiving GAOA LRF Funding

GAOA LRF is improving the conditions of or demolishing deteriorated facilities at 26 BIE-funded boarding and day schools. Along with repairs to educational facilities, project work is also replacing and renovating school staff housing to improve staff recruitment and retention, reducing costs related to ongoing maintenance, and improving safety of residential buildings.





## Bureau of Land Management



Completed trail and observation renovations at Gooseberry Badlands in Wyoming.  
Photo Credit: BLM

BLM receives 5%, or \$95 million, of GAOA LRF funding each year for a total of \$475 million across all five years. GAOA LRF is funding projects that improve assets at BLM public lands sites, helping to expand recreation access for visitors; restoring backbone infrastructure like roads, bridges, and dams; and supporting the wildland firefighters and law enforcement officials who work on these lands.



**580+ Assets**  
Improved



**\$475 Million**  
GAOA LRF Funding



**\$495 Million**  
Estimated DM&R  
Addressed



**149**  
Projects

BLM is a leader in wildlife fire management and runs a dedicated national fire and aviation program which focuses on fire suppression, preparedness, predictive services, vegetative fuels management, community assistance and protection, and fire prevention through education. BLM directed nearly \$65 million in GAOA LRF funding toward the facilities that enable staff to provide crucial wildland fire support.

**\$65 Million in Fire  
Management  
Support Projects**

Dams are a vital part of BLM's backbone infrastructure, providing critical water sources for fire management, access to drinking water for local populations, and habitat for wildlife species. GAOA LRF projects are repairing 30 of these aging and deteriorating dams. These repairs address safety concerns, so the dams are safe and operational for staff, local communities, and wildlife.

**30 Dam Repairs  
Funded by  
GAOA LRF**

BLM manages a vast network of roads, providing access to hunting and fishing opportunities, scenic drives, and rugged backcountry, and connecting BLM lands to local communities. GAOA LRF projects are improving approximately 630 miles of roads, providing safe access to countless recreation opportunities.

**630+ Miles  
of Roads**

GAOA LRF is repairing recreation assets across BLM lands, including 425 campgrounds, picnic areas, trailheads, and other day use areas. Projects will allow visitors at BLM sites to safely enjoy camping, hiking, picnicking, fishing, wildlife viewing, and boating.

**420+ Campgrounds,  
Picnic Areas,  
Trailheads,  
and Other Day  
Use Areas**



Completed installation of replacement interpretative signage at Saratoga National Historical Park.  
Photo Credit: NPS

NPS receives 70%, or \$1.33 billion, of GAOA LRF funding each year for a total of \$6.65 billion across all five years. GAOA LRF is funding projects at some of the Nation’s most beloved sites in the National Park System, where hundreds of millions of visitors travel each year to experience natural wonders, rich history, and cultural landmarks. These projects are making sites safer for visitors, restoring important historical assets, and improving roads and bridges, which play a vital role in keeping sites open and operational.



2,350+ Assets Improved



\$6.65 Billion GAOA LRF Funding



\$4.7 Billion Estimated DM&R Addressed



184 Projects (Excluding MAT funding)

211.9 Million Visitors Per Year

Visitors travel to national parks, scenic and historic trails, recreation areas, monuments, memorials, and historical sites in the National Park System to connect with nature, enjoy recreation, and learn about America’s culture and history. In 2024, 211.9 million people visited an NPS site that is directly benefiting from at least one GAOA LRF project.\*  
*\* Source: NPS, “Annual Park Ranking Report for Recreation Visits in 2024”*

420+ Historic Landmark Assets

GAOA LRF provides historic preservation and repairs at NPS sites with an important connection to American history. From Gettysburg National Military Park to the Statue of Liberty National Monument, GAOA LRF projects are restoring historic landmarks at 60 locations across the country.

370 Roads and Bridges

Transportation assets, such as roads and bridges, are backbone infrastructure critical to keeping parks open, safe, and accessible to the public. GAOA LRF projects are repairing approximately 708 miles of roads and bridges across 370 assets, helping visitors safely reach their destinations by repairing crumbling pavement or potholes, reducing roadway flooding, and improving pavement markings.

570+ Miles of Trails

National parks are home to some of our Nation’s most scenic and iconic hiking trails. GAOA LRF is restoring approximately 570 miles of trails at NPS sites to provide safe and enjoyable hiking opportunities for visitors.

40+ Campgrounds and Picnic Areas

Campsites and picnic areas provide opportunities for visitors to rest, hydrate, and appreciate the natural beauty sites have to offer. GAOA LRF projects are supporting repairs to more than 40 campgrounds and picnic areas in the National Park System, so these sites can remain open and accessible for visitors.



Completed repairs to the siding and roof of the visitor center at Bear River Migratory Bird Refuge.  
Photo Credit: FWS.

FWS receives 5%, or \$95 million, of GAOA LRF funding each year for a total of \$475 million across all five years. GAOA LRF is funding projects at national wildlife refuges that improve recreation opportunities, particularly for hunters and fishermen, provide safer facilities for staff and visitors, and restore critical infrastructure. Some of this infrastructure delivers safe drinking water for visitors and creates suitable habitats for refuge wildlife populations.



500+ Assets Improved



\$475 Million GAOA LRF Funding



\$565 Million Estimated DM&R Addressed



45 Projects (Excluding MAT funding)

The National Wildlife Refuge System consists of an unparalleled network of public lands and waters, which provide incredible recreation and wildlife viewing opportunities for visitors. GAOA LRF projects enhance the visitor experience across this system. In 2023, 11.7 million people visited national wildlife refuges benefiting from at least one GAOA LRF project.

11.7 Million Visitors Per Year

Water infrastructure assets support critical functions at national wildlife refuges, providing visitors with clean drinking water and operational restrooms, and helping to create suitable habitat for wildlife populations. Across the FWS project portfolio, GAOA LRF investments are funding repairs to more than 30 of these water infrastructure assets across 9 projects.

30+ Water Infrastructure Assets

Hunting and fishing are two of America’s oldest pastimes, allowing Americans to connect to nature and wildlife. GAOA LRF is repairing assets such as hunting blinds and fishing docks to help preserve access to hunting and fishing activities on 85% of FWS’s GAOA LRF projects.

85% of Projects at Hunting and Fishing Locations

GAOA LRF-funded MAT activities at FWS sites help provide infrastructure repairs across small and medium sized refuges. Because teams are regionally based and are completed by existing FWS staff, MATs are deployed quickly and efficiently to resolve outstanding maintenance needs while training the next generation of the maintenance workforce. Throughout GAOA LRF’s five years of programming, FWS’ MATs have received \$51.7 million in funding.

\$51.7 Million in MAT Funding



# Conclusion

# GAOA LRF's Continued Legacy

Over the past five years, GAOA LRF has and continues to deliver measurable, transformational impacts across America's public lands and at BIE-funded schools. The scale and reach of this effort have spanned the country touching every single state, the District of Columbia, and multiple U.S. territories. The program produces robust economic activity, creating thousands of jobs and generating billions for local economies. These projects repair what was broken and reimagine what is possible. Projects span public lands' most pressing challenges – modernizing outdated infrastructure, replacing aging visitor centers, improving accessibility, and more. GAOA LRF is making public lands safer, more resilient, and welcoming to all.

Most importantly, GAOA LRF is creating a foundation for a new era of stewardship. The past five years have shown that with strategic investment and collaboration, Interior can resolve generational challenges. GAOA LRF is helping Interior and our public lands establish lasting success by investing in infrastructure repairs and modernization that will endure and training the next generation of maintenance professionals. The work completed and ongoing under GAOA LRF restores our favorite places and elevates how we experience and take care of the outdoors.

In the spirit of public service and conservation, GAOA LRF is fulfilling a powerful goal: to leave the campsite better than we found it. And in doing so, it reaffirms the enduring value of our public lands as places to visit, invest in, care for, and pass on to the next generation.



