



U.S. Fish and Wildlife Service  
Bureau of Land Management  
National Park Service  
Bureau of Indian Affairs

## Federal Subsistence Board

1011 East Tudor Road, MS 121  
Anchorage, AK 99503-6199



Forest Service

# YUKON AREA 6-INCH WHITEFISH OPPORTUNITY IN COASTAL DISTRICT AND DISTRICT 1

## TEMPORARY SPECIAL ACTION

Under Authority of: 36 CFR 242.10 and .19  
43 CFR 51.10 and .19

---

**Temporary Special Action No: 2-FC-06-25**

Issued at: Fairbanks, Alaska, August 13, 2025

Effective Date: Sunday, August 17, 2025, 12:00 p.m. for Coastal District and District 1

Expiration Date: Wednesday, December 31, 2025, 8:00 a.m., unless superseded by subsequent special action

### **EXPLANATION:**

This **Temporary Special Action** allows the use of **6-inch** (or smaller) **mesh set gillnets to target non-salmon in limited areas without migrating or spawning salmon** in Federal public waters of Yukon Coastal District and District 1 (see map on page 4 for specific areas). Non-salmon include sheefish, whitefish species, pike, and burbot. Fishermen should not be catching any salmon in these limited areas. These 6-inch whitefish opportunities are not allowed in the mainstem rivers or streams, or any main channels where salmon are present.

### **REGULATION:**

In Federal public waters of the Coastal District and District 1, subsistence salmon fishing for Chinook, chum, and coho salmon is currently closed to all users and this remains in effect throughout the Yukon River drainage. Gillnets of 4-inch and smaller mesh or manned fishwheels may only be used to target non-salmon on a weekly schedule from noon Thursdays until noon Sundays, and these restrictions remain in effect in all closed areas below.

36 CFR 242.27(e)(3) and 43 CFR 51.27(e)(3) Subsistence taking of fish—Yukon-Northern Area is further amended to read:

(ii) **In Federal public waters of the following areas:**

#### **Coastal District and District 1:**

**Effective 12:00 p.m. on Sunday, August 17, non-salmon subsistence fishing with 6-inch or smaller mesh gillnets, limited to 60 feet in length, operated as a set net near shore is allowed, 24 hours a day, 7 days per week in all lakes without a closed drainage flowing into them, plus the rivers and sloughs listed below and named on the map.**

The following coastal drainages are open with 6-inch set gillnets for whitefish and other non-salmon **from 1 mile** upstream of the mouth. Coordinates mark the downstream end of the open area:

<i>Whitefish/Non-salmon Area</i>	<i>Latitude</i>	<i>Longitude</i>
Aknerkochik River	61° 06.266' N	165° 07.183' W
Kealavik River	61° 01.117' N	164° 56.610' W
Kun River	61° 50.815' N	165° 35.352' W
Lithkealik River	61° 42.454' N	165° 51.656' W
Narokachik River	61° 04.180' N	164° 51.928' W
Ninglikfak River	61° 29.032' N	165° 43.468' W
Pastoliak River	63° 01.901' N	163° 14.931' W

The following drainages are open with 6-inch set gillnets for whitefish and other non-salmon **from 500-feet** upstream of a closed area. Coordinates mark the downstream end of the open area:

<i>Whitefish/Non-salmon Area</i>	<i>Latitude</i>	<i>Longitude</i>
Anakshek Pass upstream of the Kwemeluk Pass confluence	62° 16.427' N	164° 50.765' W
Big River	61° 48.517' N	163° 25.312' W
Chelunginik River	61° 38.889' N	165° 23.863' W
Ear River	61° 50.793' N	165° 28.194' W
Kuttak River	61° 40.679' N	165° 34.982' W
Kwecharak River upstream of the Komoiarak Slough confluence	61° 38.684' N	165° 40.430' W
Manokinak River upstream of the Nungatak River confluence	61° 31.172' N	164° 23.095' W
Nantok River	61° 51.287' N	163° 51.381' W
Nanvaranak (Hamilton) Slough	62° 43.656' N	163° 56.290' W
Pitmik River	61° 47.269' N	163° 38.005' W
Piyukenuk River	61° 37.887' N	165° 04.870' W
Ponglevik River	62° 16.172' N	164° 36.032' W
Talik River	61° 13.623' N	164° 38.899' W
Tungpuk River	61° 52.146' N	165° 17.518' W

Fishing with other non-salmon gears, including hook and line with a rod or pole, hand line, longline, fyke net, dip net, and beach seine, is open 24 hours a day, 7 days per week throughout the Yukon River drainage. Pink and sockeye salmon may be retained. Chinook, chum and coho salmon must be released alive from non-lethal gear types. If closed salmon species are caught while fishing for non-salmon with gillnets, they should be released alive when possible but may be legally retained if dead. Gillnets cannot block more than ½ width of any waterway.

#### **JUSTIFICATION:**

The areas opened to target whitefish and other non-salmon with 6-inch set gillnets are assumed to be areas without spawning or migrating salmon. These non-salmon harvest areas are a response to feedback from subsistence users asking for larger mesh gillnet opportunities to target the large whitefish and other non-salmon species known to be in these areas during the fall season. We have used databases and Indigenous and local knowledge to exclude areas that could have spawning or migrating salmon. Closure buffers (1 mile upstream from the mouth of coastal rivers, and 500 ft upstream from the mouth of closed streams) are necessary as migrating salmon could use these transitional areas to mill into, rest, and then travel back out. These closure buffers should limit any incidental harvest of salmon. Currently, there is no conservation concern for non-salmon species; therefore, fishing for non-salmon is not limited to federally qualified subsistence users.

### **CONSULTATION AND OUTREACH:**

The Yukon River salmon outlooks and management strategies were discussed at a public hearing; the Eastern Interior, Western Interior, and Yukon Kuskokwim Delta Regional Advisory Council meetings; the Yukon River Drainage Fisheries Association (YRDFA) annual Preseason Fisheries Meeting; at the Yukon River Panel and at the Yukon River Intertribal Fish commission meeting. The Federal manager offered formal Government-to-Government Tribal Consultation meetings with Yukon River drainage Tribal Governments upon request. The Federal fishery outlook and management strategy was sent to all Yukon Tribal and City governments on May 23. Approximately 3,500 copies of the ADF&G and USFWS Preseason Outlook flier were mailed to Yukon River fishing households in May.

This action was taken following coordination with the ADF&G fishery managers. The fishing schedules and/or restrictions announced here match those issued concurrently by the ADF&G in state waters (Fall Fishery Advisory Announcement #10). The Federal Subsistence Regional Advisory Council Chairs for the Yukon-Kuskokwim Delta, Eastern Interior, Western Interior, and Seward Peninsula Regional Advisory Councils were notified as was the Chair and vice-chair of the Yukon River Intertribal Fish Commission. Review was provided by the Office of Subsistence Management.

Federal Subsistence Board by delegation to:

*Holly C Carroll*

Holly Carroll

U.S. Fish and Wildlife Service

Yukon River Inseason Fisheries Manager

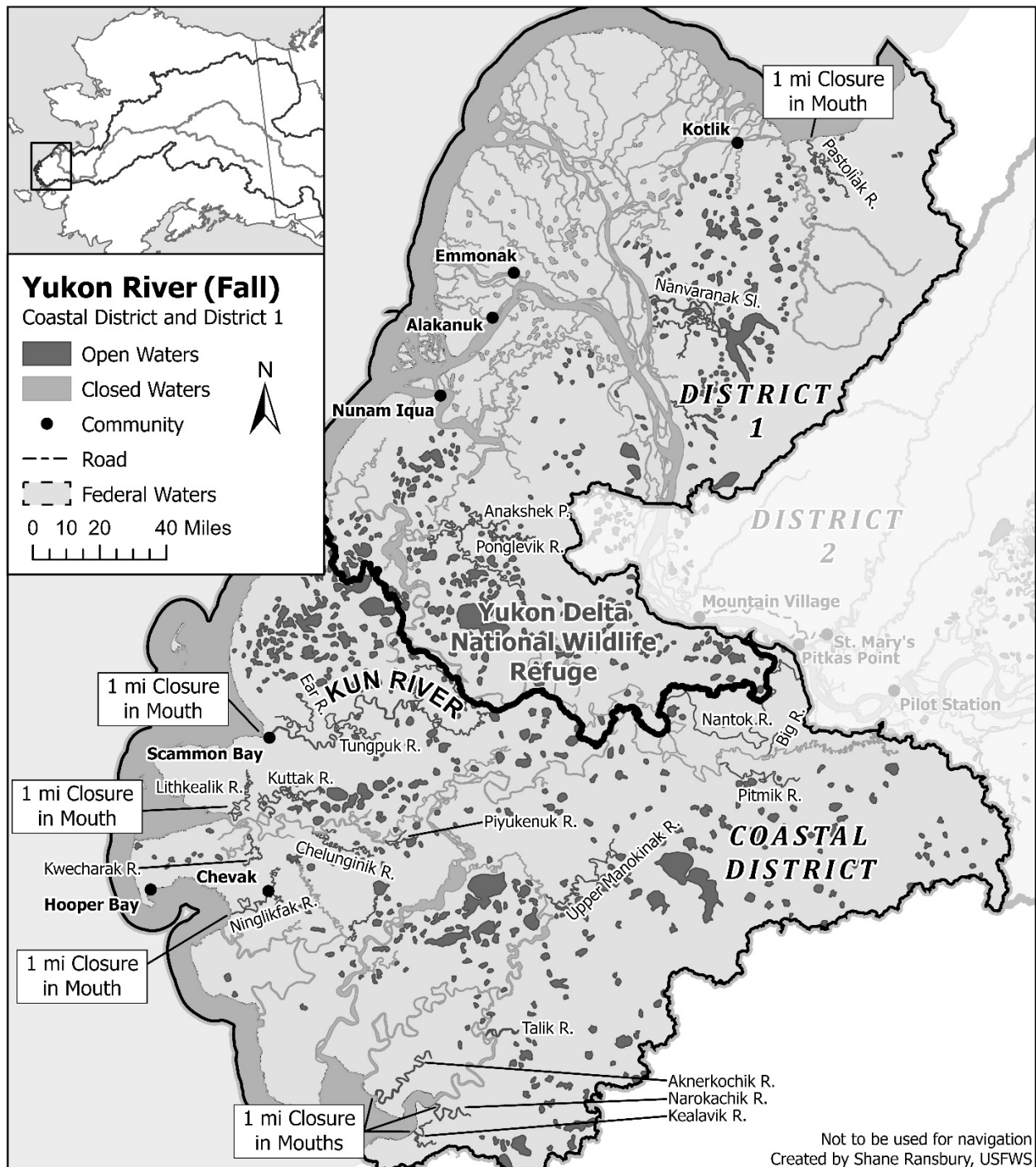
Northern Alaska Fish and Wildlife Field Office

For additional information concerning Yukon River Federal Special Actions contact Assistant Yukon River Federal Manager Keith Herron at (907) 334-5391, or Yukon Federal Assessment Biologist Shane Ransbury at (907) 334-5389.

For information concerning State management actions, contact Acting Yukon River Fall Season Manager, Matthew Olson, and Summer Season Manager, Deena Jallen, in Fairbanks at (907) 459-7274 or in Emmonak at (907) 949-1320. For fishing restrictions, schedules and counts for your area please call the toll-free recording: 1-866-479-7387

Information about the Federal Subsistence Management Program may be found on the web at [www.doi.gov/subsistence](http://www.doi.gov/subsistence) or by visiting [www.facebook.com/subsistencealaska](https://www.facebook.com/subsistencealaska).

**Missing out on the latest Federal subsistence issues?** If you'd like to receive emails and notifications on the Federal Subsistence Management Program you may subscribe for regular updates by emailing [subsistence@ios.doi.gov](mailto:subsistence@ios.doi.gov).



Map showing open and closed areas for Fall whitefish harvest with 6-inch set gillnets. For the Coastal District and District 1, all labeled waterways and all lakes without a closed drainage flowing into them are open to 6-inch set gillnets for non-salmon (dark gray). Rivers and sloughs that are open to 6-inch non-salmon fishing (dark grey) have a closure buffer from the mouth to 500 feet upstream of closed areas. Rivers flowing into the coast have a longer buffer, from the mouth to 1-mile upstream. Areas that remain closed to 6-inch set gillnets are not named but are shown in light gray.

**DISTRIBUTION:**

Anthony Christianson, Chair, Federal Subsistence Board  
Sara Boario, Alaska Regional Director, USFWS  
Jackie Cleveland, Chair, Yukon-Kuskokwim Delta Subsistence Regional Advisory Council  
Jack Reakoff, Chair, Western Interior Subsistence Regional Advisory Council  
Charlie Wright, Chair, Eastern Interior Subsistence Regional Advisory Council and chair of Yukon  
River Intertribal Fish Commission  
Louis Green Jr, Chair, Seward Peninsula Subsistence Regional Advisory Council  
Phet Souphanya, Assistant Special Agent in Charge, LE Division, USFWS  
Crystal Leonetti, Director, Office of Subsistence Management  
Scott Ayers, Deputy Director, Office of Subsistence Management  
Justin Koller, Supervisory Regulations Specialist, Office of Subsistence Management  
Vivian Korthius, Executive Director, Association of Village Council Presidents  
Dorothea Adams, Executive Director, Council of Athabascan Tribal Governments  
Bruce Thomas, Director, Natural Resources Council of Athabascan Tribal Governments  
Ben Mulligan, Deputy-Commissioner, Alaska Department of Fish and Game  
Mark Burch, Asst. Director, Wildlife Conservation, Alaska Department of Fish and Game  
Jill Klein, Alaska Regional Subsistence Coordinator, USFWS  
Boyd Blihovde, Refuge Supervisor, USFWS  
Diloolo Erickson, Tanana Chiefs Conference  
Deena Jallen, Summer Area Management Biologist, Alaska Department of Fish and Game  
Matthew Olson, Fall Area Management Biologist, Alaska Department of Fish and Game  
Eva Patton, Regional Subsistence Program Manager, National Park Service  
Kevin Pendergast, State Director, Bureau of Land Management

**Also distributed to Tribal and City Governments and any interested parties. If you didn't receive this directly and want to, please reach out to Keith Herron.**