



In The Peripheral

featuring
Monty Little

Monty is an enrolled member of the Diné (Navajo) Nation. He grew up in Tuba City, Arizona, and later studied architecture at Arizona State University. He enlisted in the Marine Corps in 2004, serving multiple tours in Southeast Asia and Iraq until his honorable discharge in 2008. Following his service, Monty enrolled in the Institute of American Indian Arts in Santa Fe, New Mexico. It was at the Institute that Monty began using multiple mediums for his work; combining painting, printmaking, collages, and installations. Monty continued his studies at the University of Wisconsin-Madison, graduating with an MFA in Printmaking in 2023.

Monty is known for creating multi-piece artwork series such as *Whispers of Geometry*, *Inaudible*, and *Consider This As Memory*. Monty creates his art by combining his own methods with traditional ones. He derives much of his work from his military experiences, and his references to war and post-war life spill out in textured and chaotic imagery, often expressed through techniques of erasure.

Monty's most recent series *In the Peripheral* is significant to him as a Native American. It reflects the fact that he is guided forward by the past but in his words, "I also have to have a keen sense of the peripheral and be ever aware of it." Monty's wide and vigilant world view is integral to his artwork.

Monty Little's artwork may be purchased through the Journey Museum Gift Shop, (605) 394-6923. Purchase inquiries after the closing of the exhibition can be directed to the artist website at www.montylittle.com.

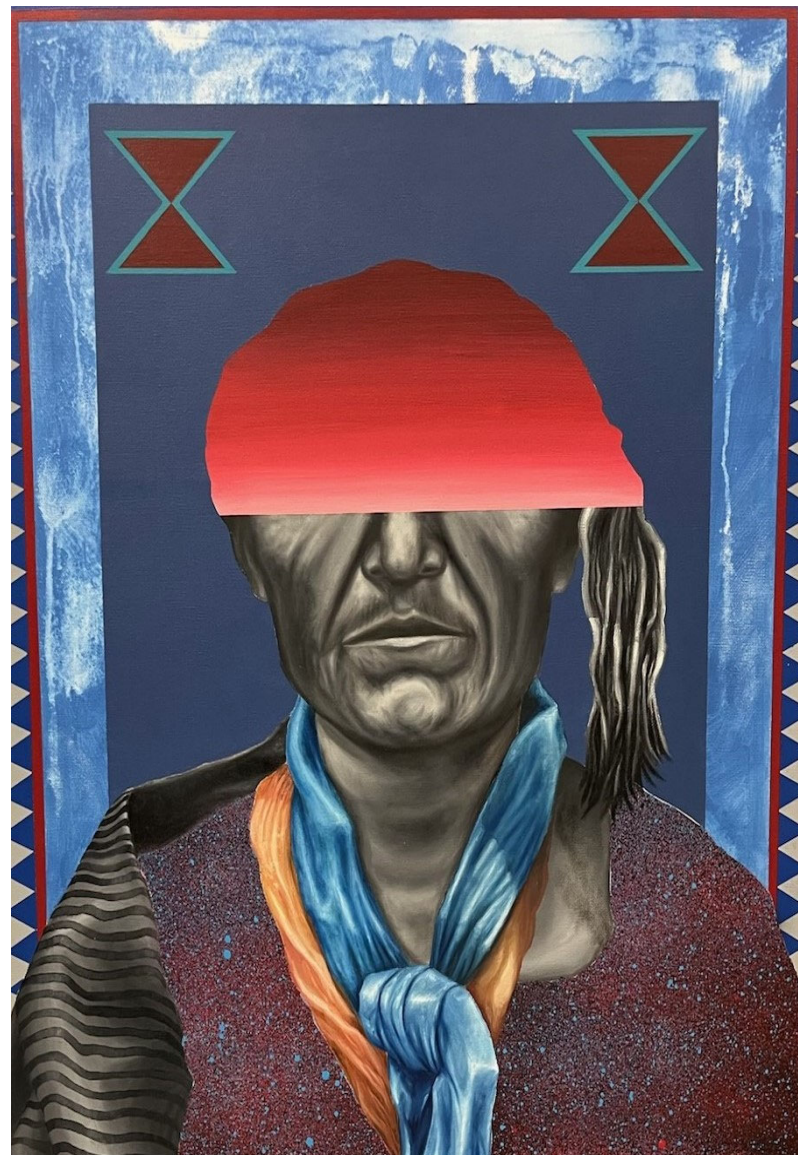
The Sioux Indian Museum, administered by the U.S. Department of the Interior, Indian Arts and Crafts Board, is located in The Journey Museum, 222 New York Street, Rapid City, SD 57701. For admission fees and hours of operation please visit www.doi.gov/iacb/our-museums/sioux or call 605.391.6923.

U.S. Department of the Interior
Indian Arts and Crafts Board
www.doi.gov/iacb

Sioux Indian Museum
222 New York Street.
Rapid City, SD 57701
(605) 394-2381

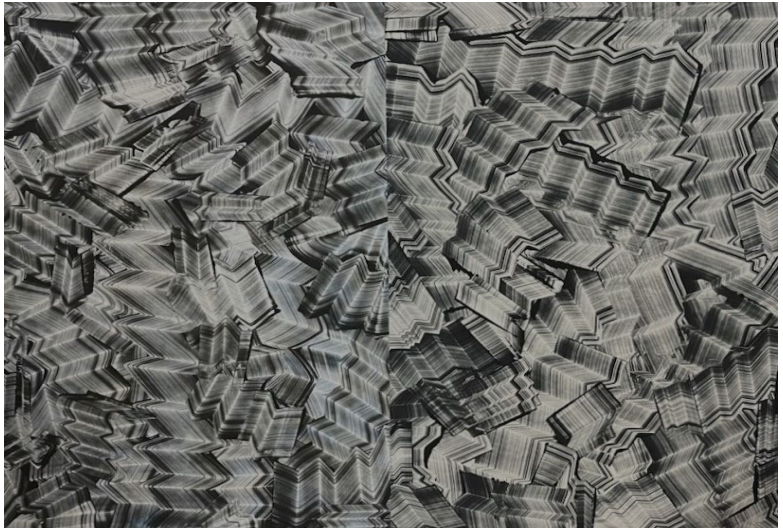
In the Peripheral

Featuring
Monty Little



September 30 - December 30, 2025

In The Peripheral
monotype on paper
mounted to canvas,
30 x 40 x .75 inches
Monty Little,

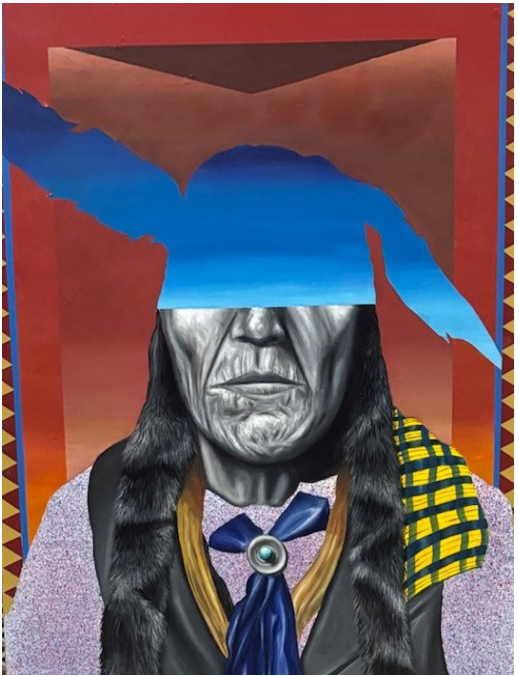


©2025

Whispers of Geometry 5
plate lithography, monotype,
and collage on paper
21 x 16 inches (paper size), 26
x 22 x .75 inches (framed),
Monty Little, © 2025



Whispers of Geometry 4
plate lithography, monotype,
and collage on paper
21 x 16 inches (paper size), 26
x 22 x .75 inches (framed),
Monty Little, © 2025



***Consider This As
Memory 05***
oil, acrylic and spray paint
on canvas, 24 " x 30 "
Monty Little, © 2025

Cover Image:
***Consider This As
Memory 06***
oil, acrylic and spray paint
on canvas, 24 " x 30 "
Monty Little, © 2025