

### About this map

This map shows Federal subsistence fisheries jurisdiction. **This map does not show land ownership. Verify land ownership before using or crossing any land.**

### Federal subsistence fisheries jurisdiction

Federal subsistence fisheries jurisdiction applies to select marine waters and to all navigable/non-navigable inland waters within or adjacent to the exterior boundaries of Federal conservation system units. In applicable marine waters, Federal subsistence fisheries jurisdiction extends to mean high tide. On general domain lands, Federal subsistence fisheries jurisdiction applies only to non-navigable waters.

### Closed waters

Some Federal waters may be closed to subsistence uses. For the most current closure information, contact the Federal land management agency nearest to where you wish to take fish for subsistence purposes.

### Disclaimer

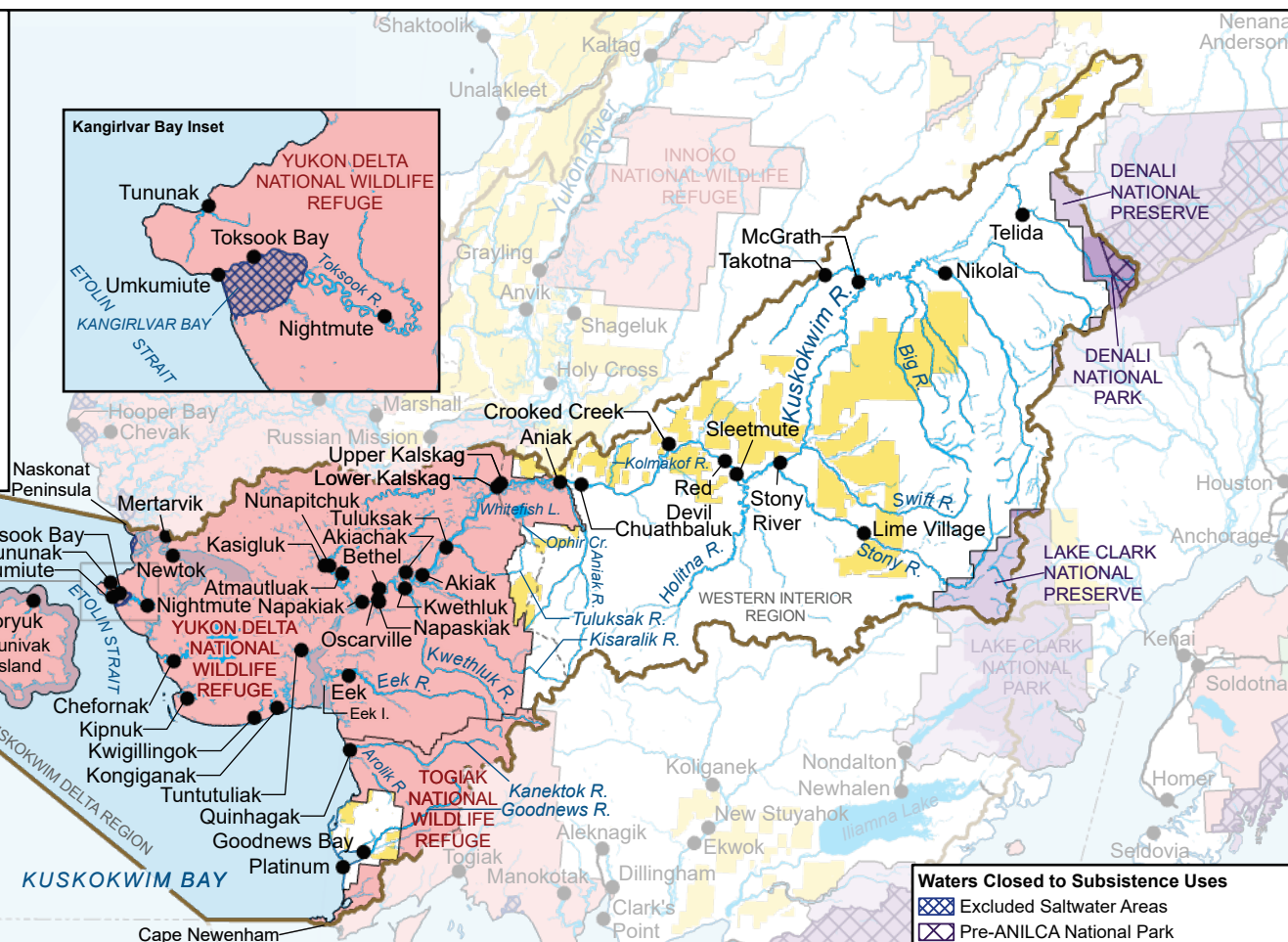
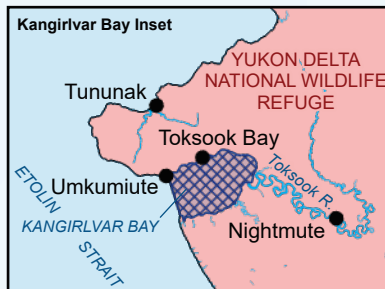
The Office of Subsistence Management assumes no liability for damages resulting from use of this map. Data in this map may be incomplete or contain errors. Map not to be used for navigational purposes. Map updated June 2025.

Federal Subsistence Management Program  
Fishery Management Area

## Kuskokwim Area

**Regions:**  
Yukon-Kuskokwim  
Western Interior

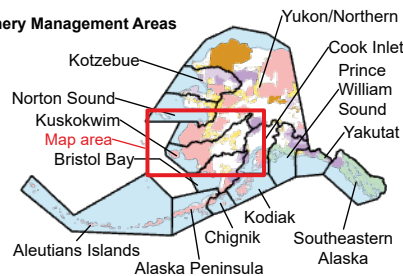
0 120  
N Miles



### Waters Closed to Subsistence Uses

- Excluded Saltwater Areas
- Pre-ANILCA National Park

### Fishery Management Areas



### Federal Subsistence Fisheries Jurisdiction

— Conservation System Unit Boundary

#### Conservation System Units

- BLM Administered Unit
- NPS Administered Park Unit
- NPS Administered Preserve Unit
- USFS Administered Unit
- USFWS Administered Unit

#### General Domain Land

- BLM (Non-navigable waters only)