



Federal Subsistence Board Fact Sheet



Changes to Moose Hunting Regulations in Unit 13 Frequently asked questions on closure of federal public lands to non-federally qualified users

On April 24, 2026, the Federal Subsistence Board (Board) adopted Wildlife Proposal WP26-31 to close Bureau of Land Management (BLM) lands in Unit 13 to moose hunting by non-federally qualified users. This fact sheet answers common questions and concerns about the closure.

Where does the federal closure apply?

The closure applies to the BLM lands in Unit 13 that are open to federal subsistence hunting, which total about 6% of the Unit 13 hunt area (**Map 1**). Closed lands include the federal subsistence hunt areas along the Richardson Highway near Paxson and the Delta and Gulkana river corridors. State-selected BLM lands, e.g., parts of the Tangle Lakes Archaeological District, remain open to all hunters.

Other maps and information about federal subsistence hunting in Unit 13 can be found at https://www.blm.gov/programs/natural-resources/subsistence/hunting_GMU13.

What activities are prohibited within the closure area?

Non-federally qualified users (State hunters, or those hunting with a State permit under State regulations) may not hunt or harvest moose within the closure area. However, non-federally qualified users may still travel through, camp, and hunt/trap for other species on the closed BLM lands. These lands also remain open to all other activities such as hiking, boating, wildlife viewing, etc. Anyone may accompany federally qualified subsistence users hunting in the closed BLM areas but may only participate in take if they are also federally qualified subsistence users.

Who is eligible to hunt moose on BLM lands in Unit 13?

Only “federally qualified subsistence users” will be eligible to hunt moose on federal public lands in the closure area. “Federally qualified subsistence users” are rural Alaska residents who have a customary and traditional use determination for moose in Unit 13. For customary and traditional use determinations see [43 CFR 51.24](https://www.doi.gov/subsistence/wildlife) or the federal subsistence regulations book at: <https://www.doi.gov/subsistence/wildlife>.

How long will this closure be in effect?

The closure is effective upon publication of the final rule, likely late summer 2026, until rescinded by the Board. Under federal regulations the Board reviews all closures every four years to ensure closures are necessary or determine if removal is warranted; this closure will be reviewed in 2030. Alternatively, anyone may submit a proposal to rescind the closure during any call for proposals to change federal subsistence wildlife regulations, which occur in the spring of every odd year (i.e., spring 2027). Information on submitting proposals to change federal subsistence regulations can be found at <https://www.doi.gov/sites/default/files/documents/2025-08/2025how-change-fed-subsis-regulations-final.pdf>.

Can a non-federally qualified user take moose on gravel bars along navigable waters below the “ordinary high-water mark” when the adjacent uplands are federal public lands?

Yes. Please note; however, that the taking of swimming moose is prohibited under federal and State law in all portions of Unit 13. See [43 CFR 51.26\(b\)\(15\)](https://www.doi.gov/subsistence/wildlife) and [5 AAC 92.085\(7\)](https://www.doi.gov/subsistence/wildlife).



Federal Subsistence Board Fact Sheet



How is “ordinary high-water mark” defined?

The ordinary high-water mark means “that line on the shore established by the fluctuations of water and indicated by physical characteristics such as a clear, natural line impressed on the bank, shelving, changes in the character of soil, destruction of terrestrial vegetation, the presence of litter and debris, or other appropriate means that consider the characteristics of the surrounding areas” ([33 CFR 328.3](#)).

Can a federally qualified subsistence user hunt in the closure area with only a State registration permit?

No, federal registration permits (FM1301) are required to hunt moose under federal subsistence regulations in Unit 13.

Why did the Board enact this closure?

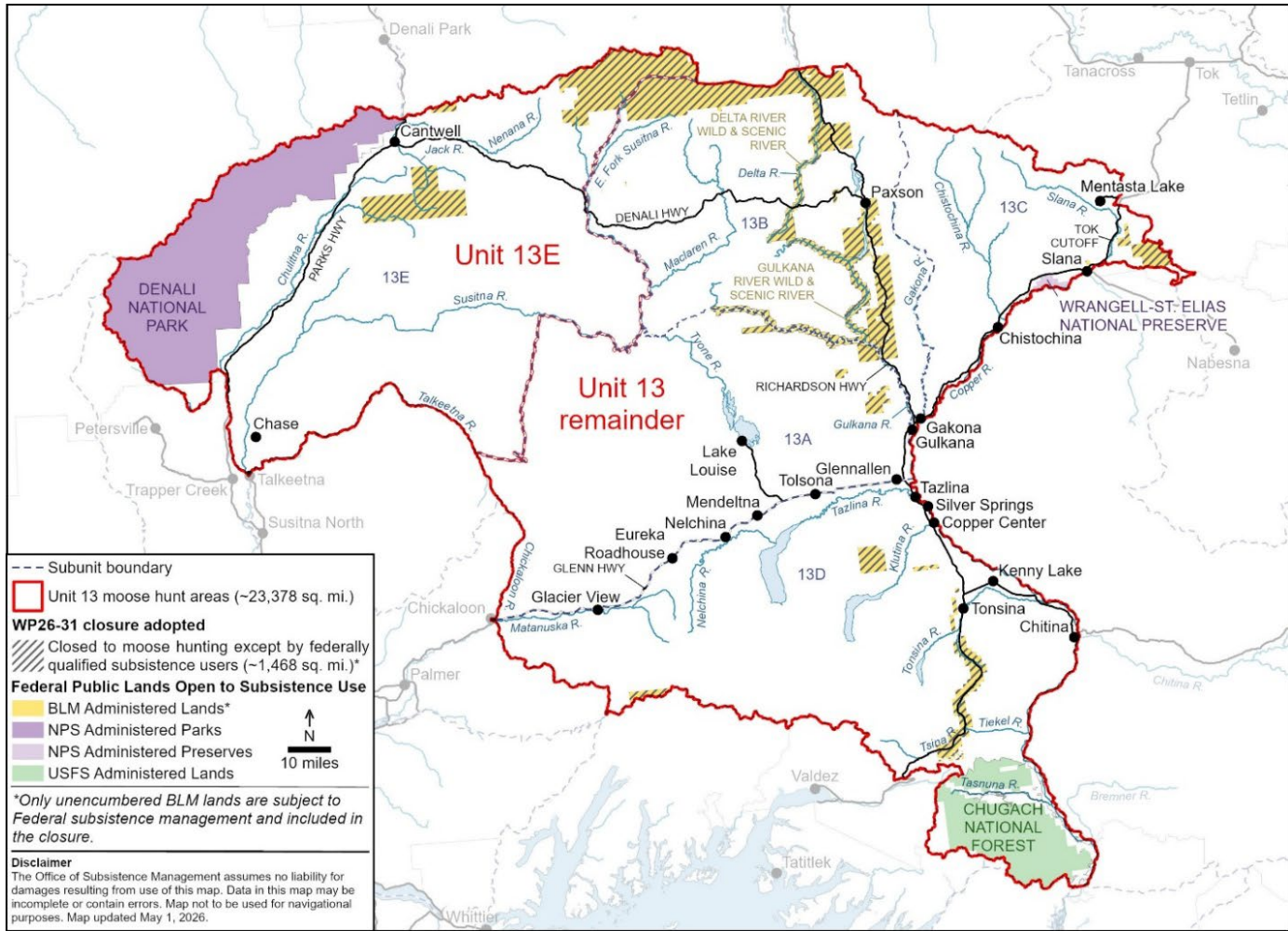
The Board makes changes to federal wildlife regulations through a public process. A federal subsistence wildlife proposal was submitted during the call for proposals requesting to close BLM lands in Unit 13 to moose hunting by non-federally qualified users (Wildlife Proposal WP26-31). The Board adopted WP26-31 at their wildlife regulatory meeting in April 2026 to continue subsistence uses of moose, noting declines in other important subsistence resources, public reports of low harvest and high competition with non-federally qualified users, and in deference to the findings of the Southcentral Alaska Subsistence Regional Advisory Council.

Who should I contact if I have further questions about this closure?

Please contact the Office of Subsistence Management at (907) 786-3888, (800) 478-1456 or subsistence@ios.doi.gov. You can also contact the BLM Glennallen Field Office at (907) 822-3217.

Information about the Federal Subsistence Management Program may be found on the web at www.doi.gov/subsistence or by visiting www.facebook.com/subsistencealaska.

Missing out on the latest federal subsistence issues? To receive emails updates on Federal Subsistence Management Program activities, send a request to subsistence@ios.doi.gov.



Map 1. BLM lands closed to moose hunting by non-federally qualified users in Unit 13. Closed lands are indicated by hatched areas, totaling approximately 1,468 sq. mi. or about 6% of the Unit 13 hunt area. <https://www.doi.gov/sites/default/files/documents/2026-05/unit13mooseclosureadopted.pdf>.