



# Federal Subsistence Board Bulletin



**For Immediate Release:**  
May 22, 2026

**Contact Information:**  
[Interior\\_Press@ios.doi.gov](mailto:Interior_Press@ios.doi.gov)

## Kuskokwim River Mainstem Fishing Opportunities

Pursuant to authority delegated by the Federal Subsistence Board, the Yukon Delta National Wildlife Refuge In-Season Manager hereby announces five gillnet fishing opportunities within the refuge boundary in the Kuskokwim River mainstem for **federally qualified subsistence users only**:

### Set gillnet:

- **June 2, 2026 07:00 a.m. to 11:00 p.m.**
- **June 5, 2026 07:00 a.m. to 11:00 p.m.**
- **June 9, 2026 07:00 a.m. to 11:00 p.m.**

During these three opportunities, gillnets are restricted to **set gillnets** with 6-inch or less mesh, 75 feet or less in length, and may not exceed 45 meshes in depth. Additionally, set gillnets must be attached to the bank, oriented perpendicular to the river and may not be operated more than 100 feet from the ordinary high-water mark.

### Gillnet (drift and/or set):

- **June 12, 2026 07:00 a.m. to 07:00 p.m.**
- **June 16, 2026 07:00 a.m. to 07:00 p.m.**

During these two opportunities, gillnets are restricted to 6-inch or less mesh and may not exceed 45 meshes in depth and 50 fathoms (300-feet) in aggregate (total set and drift gillnet) length below the Johnson River and 25 fathoms (150 feet) in aggregate (total set and drift gillnet) length above the Johnson River.

Attached with this news release are two maps of the gillnet fishing and closure areas. Federally qualified subsistence users may retain all salmon during these opportunities. After each gillnet opportunity expires, Kuskokwim waters revert to closed under TSA-04-KSCS-26-01.

Additional harvest opportunities for federally qualified subsistence users may be announced by subsequent news releases.

The salmon bearing tributaries and areas listed in TSA-04-KSCS-26-01 will remain closed to gillnets and the harvest of Chinook and Chum Salmon during these gillnet opportunities.

Fishing from tributaries not listed in TSA-04-KSCS-26-01 is restricted to fishing 100 yards upriver from the mouth of the river (confluence with the main stem Kuskokwim River).

Information about the Federal Subsistence Management Program may be found on the web at [www.doi.gov/subsistence](http://www.doi.gov/subsistence) or by visiting [www.facebook.com/subsistencealaska](https://www.facebook.com/subsistencealaska).

**Missing out on the latest federal subsistence issues?** To receive emails updates on Federal Subsistence Management Program activities, send a request to [subsistence@ios.doi.gov](mailto:subsistence@ios.doi.gov).

~~###~~



# Lower River Fishing and Closure Area

## Legend

- Closed to gillnet fishing unless opened by announcement. Area remains open for dip nets, beach seines, fish sheels, and rod and reel.
- Closed to all means and methods for Chinook and Chum Salmon.
- YDNWR Boundary

Johnson Line North  
Degrees Minutes Seconds  
Latitude: 60° 39' 25"  
Longitude: -162° 6' 7"

---

Decimal Degrees  
Latitude: 60.65704  
Longitude: -162.10193

Johnson Line South  
Degrees Minutes Seconds  
Latitude: 60° 37' 2"  
Longitude: -162° 4' 7"

---

Decimal Degrees  
Latitude: 60.61726  
Longitude: -162.06855

Refuge Boundary West Bank  
Degrees Minutes Seconds  
Latitude: 59° 59' 46"  
Longitude: -162° 30' 54"

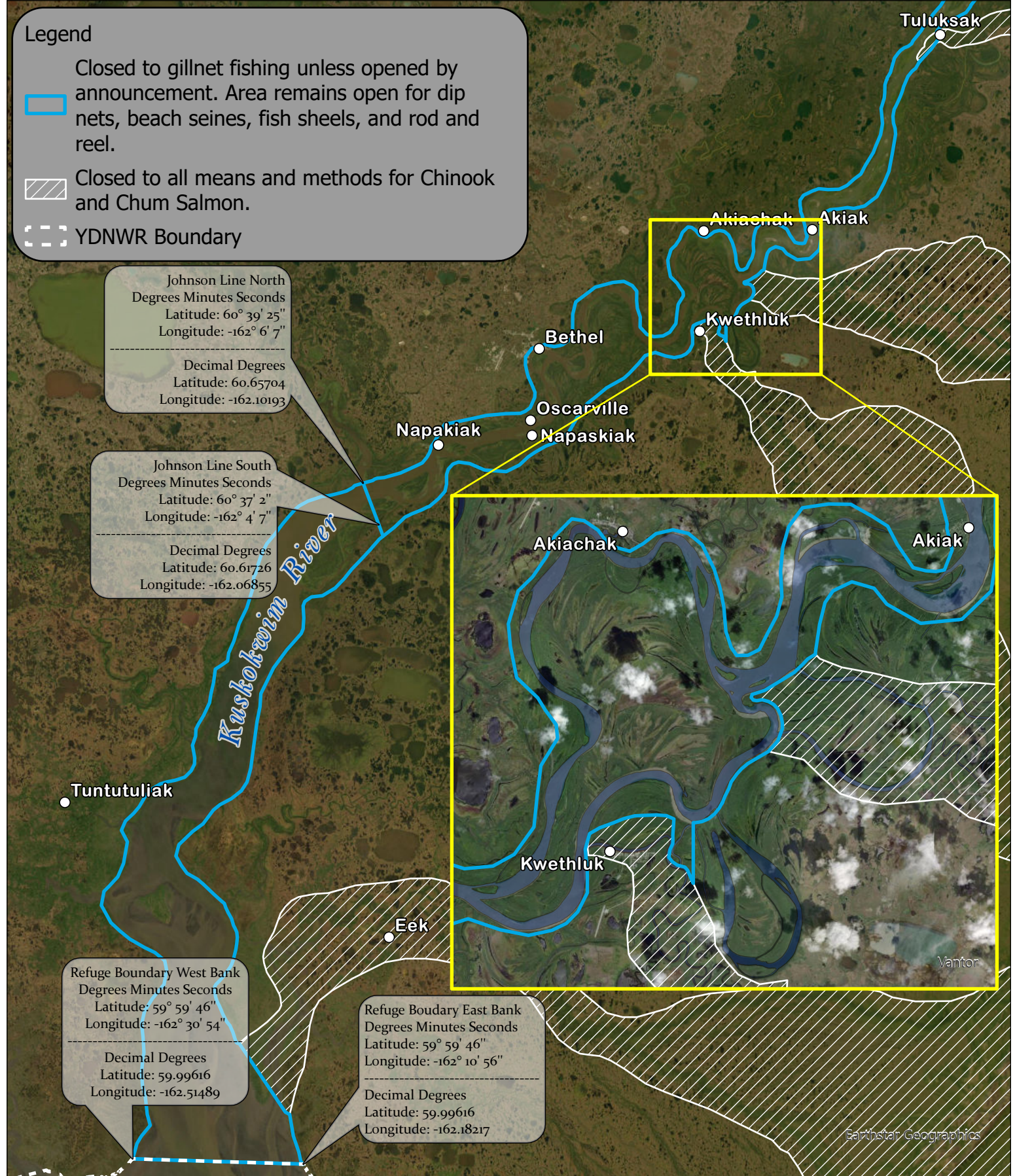
---

Decimal Degrees  
Latitude: 59.99616  
Longitude: -162.51489

Refuge Boudary East Bank  
Degrees Minutes Seconds  
Latitude: 59° 59' 46"  
Longitude: -162° 10' 56"

---

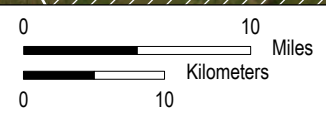
Decimal Degrees  
Latitude: 59.99616  
Longitude: -162.18217



Earthstar Geographics



While the U.S. Fish & Wildlife Service makes every effort to represent the data shown on these maps as completely and accurately as possible, the USFWS gives no warranty, expressed or implied, as to the accuracy, reliability, or completeness of these data. In addition, the USFWS shall not be held liable for improper or incorrect use of the data described and/or contained herein. Graphical representations provided by the use of this data do not represent any legal description of the data herein and are provided only as a general representation of the data. Descriptions presented in special actions supersede any depictions provided in this map.

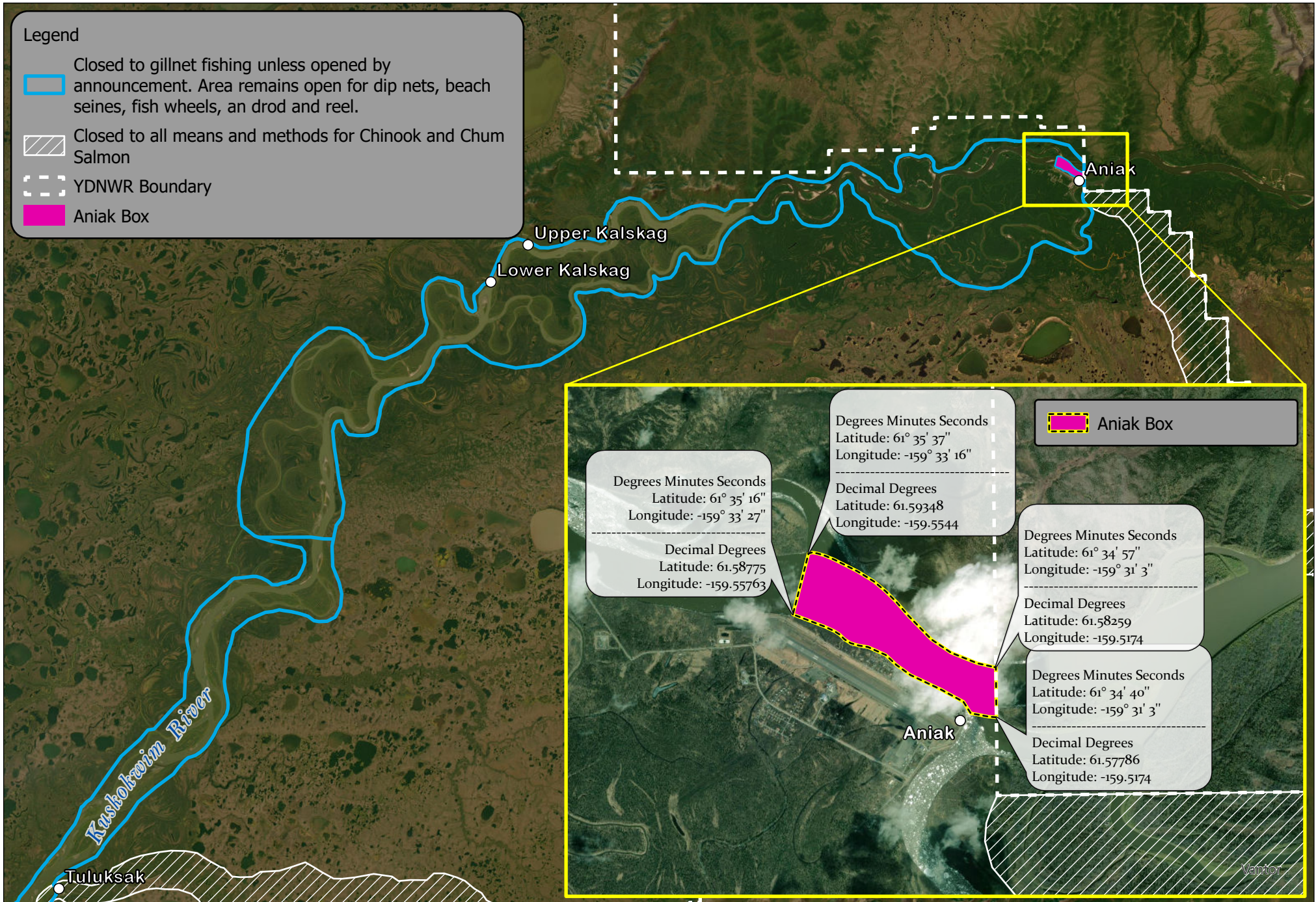




# Middle River Fishing and Closure Area

## Legend

- Closed to gillnet fishing unless opened by announcement. Area remains open for dip nets, beach seines, fish wheels, an drod and reel.
- Closed to all means and methods for Chinook and Chum Salmon
- YDNWR Boundary
- Aniak Box



Degrees Minutes Seconds  
Latitude: 61° 35' 16"  
Longitude: -159° 33' 27"

Decimal Degrees  
Latitude: 61.58775  
Longitude: -159.55763

Degrees Minutes Seconds  
Latitude: 61° 35' 37"  
Longitude: -159° 33' 16"

Decimal Degrees  
Latitude: 61.59348  
Longitude: -159.5544

Degrees Minutes Seconds  
Latitude: 61° 34' 57"  
Longitude: -159° 31' 3"

Decimal Degrees  
Latitude: 61.58259  
Longitude: -159.5174

Degrees Minutes Seconds  
Latitude: 61° 34' 40"  
Longitude: -159° 31' 3"

Decimal Degrees  
Latitude: 61.57786  
Longitude: -159.5174

Aniak Box



While the U.S. Fish & Wildlife Service makes every effort to represent the data shown on these maps as completely and accurately as possible, the USFWS gives no warranty, expressed or implied, as to the accuracy, reliability, or completeness of these data. In addition, the USFWS shall not be held liable for improper or incorrect use of the data described and/or contained herein. Graphical representations provided by the use of this data do not represent any legal description of the data herein and are provided only as a general representation of the data. Descriptions presented in special actions supersede any depictions provided in this map.

