



Gateway to the  
U.S. Virgin Islands Economy

Carlton Dowe  
Executive Director

Presented by Kai Smith  
VIPA Senior Engineer

# VIRGIN ISLANDS PORT AUTHORITY PROJECTS United States Virgin Islands

Presentation to the U.S. Department of Interior  
March 2022



# AVIATION **St. Thomas**

UNITED STATES VIRGIN ISLANDS

---



## Cyril E. King Airport (STT) Fact Sheet

No. 70 Lindbergh Bay, St. Thomas  
United States Virgin Islands



The Cyril E. King International Airport (CEKA) is located on the southwestern side of St. Thomas, U.S. Virgin Islands - approximately four miles east of the capital city, Charlotte Amalie.



The asphalt runway measures 7,000 feet long by x 150 feet wide. The existing terminal building encompasses approximately 220,000 square feet of space and was last renovated in 1992.



The airport sits on 280 acres of land. The terminal measures 190,000 square feet on the first floor and has **11 gates**. The top floor measures 60,000 square feet.





## Cyril E. King Airport Terminal Modernization & Expansion Phase One - Parking & Transportation Center Construction

1. This project will provide 319 parking spaces and offices for the rental car agencies.
2. This will allow VIPA to reclaim much needed revenue generating space within the CEKA Terminal.
3. The project is on schedule, estimated to be completed in the summer of 2023.

**Contractor:** AT Construction

**Funding Source:** 2019 U.S. Economic Development Administration Grant \$20 million, and local match of \$6.8 million

**COST: \$26.8 million**





## Cyril E. King Airport Terminal Expansion and Modernization Project Phases 2, 3 and 4

### Project Goals

1. Decouple passenger flows by removing all operational dependencies
2. Improve Transportation Security Administration (TSA) facilities to enable screening of all passengers departing on commercial aircraft regardless of aircraft size and allow TSA to incorporate TSA-Precheck
3. Improve the passenger experience and maximize concessions opportunities
4. Improve capabilities to support simultaneous aircraft arrivals from international destinations
5. The CEKA Terminal was designed to process 300K passengers, and today it processes between 700K - 900K passengers annually. Expansion is critical to improving the traveler's experience.



**ESTIMATED COST: \$350 MILLION**



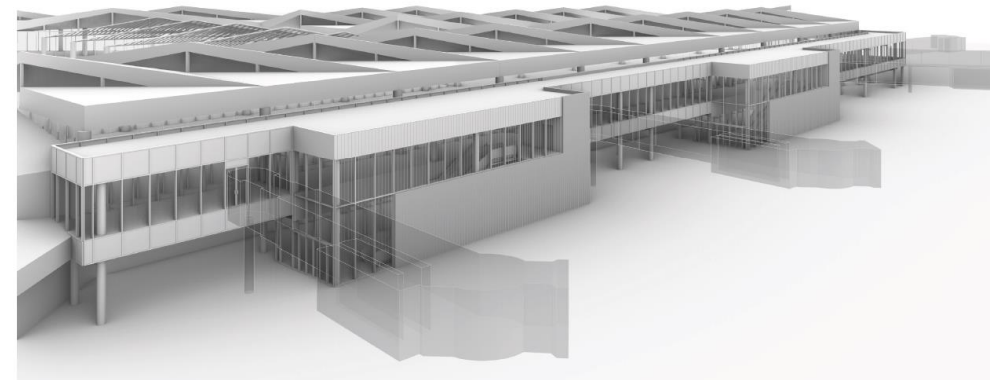
# Cyril E. King Airport Terminal Expansion & Modernization Phases 2, 3 & 4 - Project Layout

---

## Terminal Expansion & Modernization

- 1. Better Infrastructure:** construct a second story with a large atrium which would significantly increase square footage.
- 2. Larger and More Efficient Processing Areas:** expand baggage screening, baggage claim, security screening, hold rooms, concession and restroom areas.
- 3. Better Equipment:** expand HVAC systems, install and improve new plumbing, fire protection, electric, potable water and sewage system for better operations, especially during peak travel hours.
- 4. Improved Traveler Experience:** new passenger lounges, additional concessions, retail stores and other amenities.

Phase II Northern Bridge



# Cyril E. King Airport Terminal Expansion and Modernization (STT)

## St. Thomas, U.S. Virgin Islands

### Installation of Jet Bridges



# Cyril E. King Airport Terminal Expansion & Modernization St. Thomas, U.S. Virgin Islands



North Exterior View and  
Interior View of Terminal  
(second floor gate area)





# Cyril E. King Airport Terminal Expansion & Modernization St. Thomas, U.S. Virgin Islands

## STATE OF THE ART WING FOR COMMUTER & INTERNATIONAL FLIGHTS

Cyril E. King International Airport (STT) - Airport Terminal Expansion

Exterior view - East facade



Cyril E. King International Airport (STT) - Airport Terminal Expansion

Exterior view - South East Corner





# AVIATION St. Croix

UNITED STATES VIRGIN ISLANDS

---



## Henry E. Rohlsen Airport (STX) Fact Sheet

Christiansted, St. Croix  
United States Virgin Islands



The Henry E. Rohlsen Airport (HERA) - located about six miles southwest of Christiansted on St. Croix. HERA is served by two major domestic carriers and receives daily inter-island flights as well as cargo and military aircraft.



The airport encompasses 1,455 acres  
Asphalt Runway: 10,004 x 150 feet, allowing direct flights from as far away as Europe.



The two-story terminal is 181,000 square feet and has **10 gates**. Construction of the present terminal and expansion of the runway from 7,600 to 10,000 feet were completed in 2002.





## Henry E. Rohlsen Airport Terminal Expansion and Modernization Project Phase One - Domestic Traveler Lounge Expansion

St. Croix, United States Virgin Islands

This project was completed in December 2021 has doubled the capacity of the pre-clearance hold room and provide retail, concessions, food, and other amenities such as portable devices charging stations.

**Contractor:** J. Benton Construction

**Funding Source:** 2019 U.S. Economic Development Administration Grant in the amount of \$7 million, with a local match of \$1.6 million

**COST: \$8.6 million**





## Henry E. Rohlsen Airport Terminal Expansion and Modernization Project - Phases 2, 3 & 4

### St. Croix, United States Virgin Islands

1. Addition of a second level to accommodate up to four (4) jet bridges
2. Additional hold room, concession and retail space
3. Improved layout for better passenger flow and baggage handling in the terminal;
4. Redesign, expansion, and modernization of the interior of the terminal to make the best use of the existing floor plan
5. Addition of vibrant, tropical landscaping, and changes to improve the flow of vehicular traffic
6. Terminal expansion will attract larger aircraft and maximize the potential of the airport's 10,000-foot runway. Larger aircraft means more travelers and an improved tourism economy for St. Croix.



**ESTIMATED COST: \$150 MILLION**



# Henry E. Rohlsen Terminal Expansion & Modernization Project - Phase 2 Detail

## Second Floor Hold Room and Boarding Bridges (\$135M)

1. Build out of 21,000 sq. ft. on the second floor of the terminal
2. For funding purposes, this phase could be bid in smaller bid packages as funding becomes available. It is anticipated this would occur in at least two smaller subphases: Phase 2A and 2B
3. Expanded hold room on the second floor of the terminal
4. Additional concession space
5. Construction of up to four jet bridges to allow for the loading and unloading of different aircraft simultaneously.
6. Relocating the waiting area for the Puerto Rico gate hold room to the second floor allows for a more efficient flow of the terminal



# Henry E. Rohlsen Terminal Expansion & Modernization Phase 2A - Project Layout

## Second Floor Hold Room Expansion & Construction of Two (2) Jet Boarding Bridges

1. Expansion of 7,000 sq. ft. US/PR hold room to the second floor.
2. Construction of a portion of the common preboarding hold room area on a new second floor of the existing terminal area.
3. This work element includes installation of two sets of escalators, stairs, and elevators to support operations of the second-floor hold room.
4. Construct two (2) new Jet Boarding Bridges on the second story of the terminal. These new boarding bridges would serve air carriers for US bound traffic.
5. Deplaning passengers would exit the terminal via a new glass corridor and dedicated escalators to baggage claim.



# Henry E. Rohlsen Terminal Expansion & Modernization Phase 2B - Project Layout

## Construction of Two (2) Additional Jet Bridges

1. 14,000 sq. ft. addition to the second-floor hold room to the west and construct two additional parapets
2. Add two jet boarding bridges to the expanded area.
3. Construct pre-clearance area restrooms
4. Install infrastructure to support additional concession space
5. Wayfinding, signage, and data upgrades to locate all jet traffic on the second level and commuter traffic in the existing hold room constructed during phase one.





# Henry E. Rohlsen Airport Terminal Expansion and Modernization (STX)

## St. Croix, U.S. Virgin Islands

### Installation of Jet Bridges





# VIRGIN ISLANDS PORT AUTHORITY

GATEWAYS TO THE U.S. VIRGIN ISLANDS' ECONOMY

[WWW.VIPORT.COM](http://www.viport.com)

---

KAI SMITH, SENIOR ENGINEER

TEL: (340) 774-1629    E-MAIL: KSMITH@VIPORT.COM

