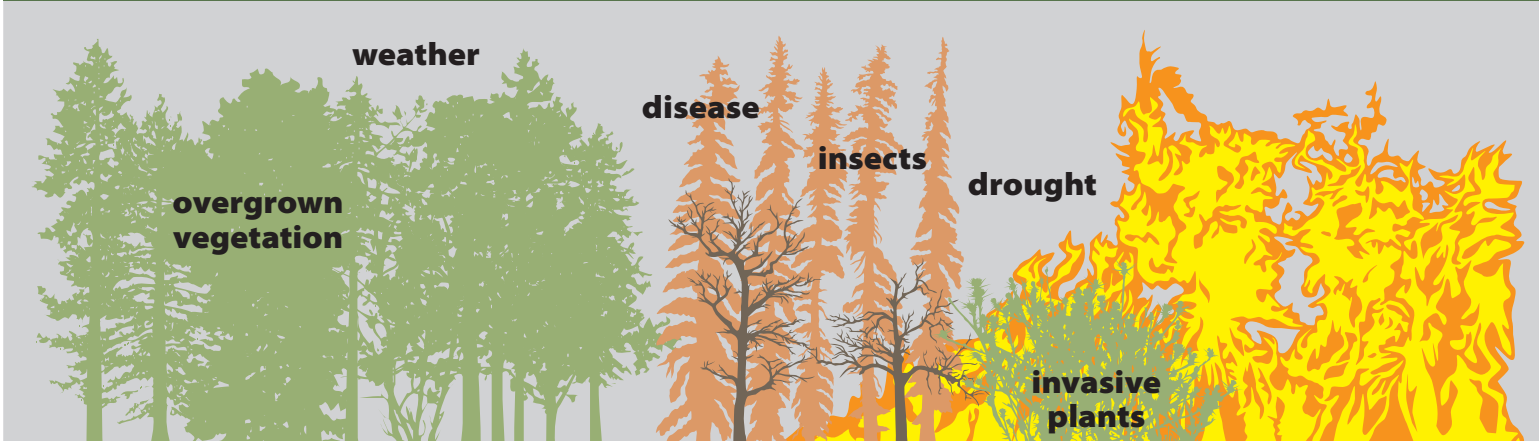




U.S. Department of the Interior

Active Vegetation Management

Excess vegetation fuels wildfires and leads to increased wildfire frequency, size, and intensity

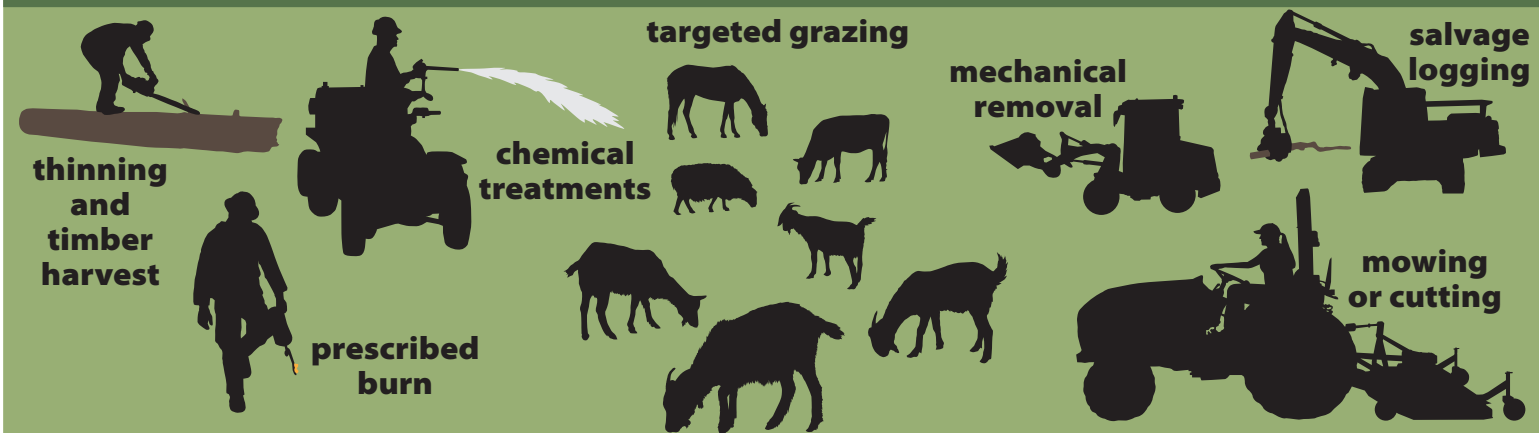


Development near or among lands at risk of wildfire is increasing



46.8 million acres of wildland urban interface (WUI)

Vegetation is actively managed using various treatment methods



Active management has many benefits

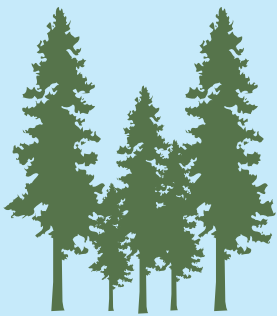
Establishes fire-resilient, healthy landscapes

Decreases the risk of catastrophic wildfires

Protects natural resources and improves native habitat



Forest management improves, maintains, and restores forests and reduces wildfire intensity



Dense forests are at greater risk for intense fires

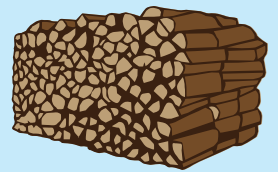


Forestry practices can reduce that risk



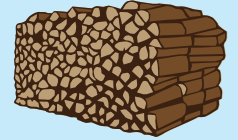
613 million board feet (MBF) offered for sale from DOI-administered lands in fiscal year (FY) 2018

381 MBF



Bureau of Indian Affairs

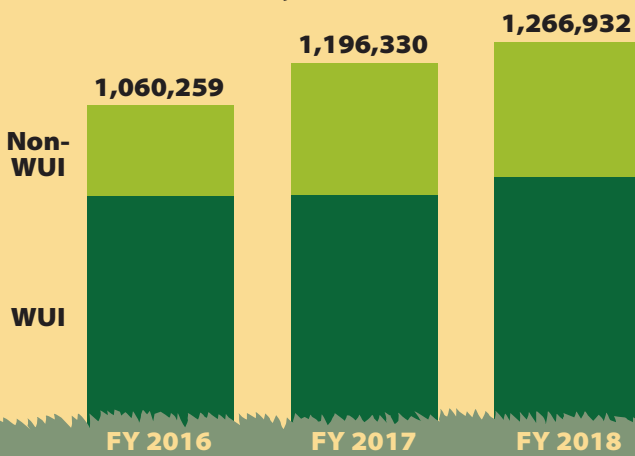
232 MBF



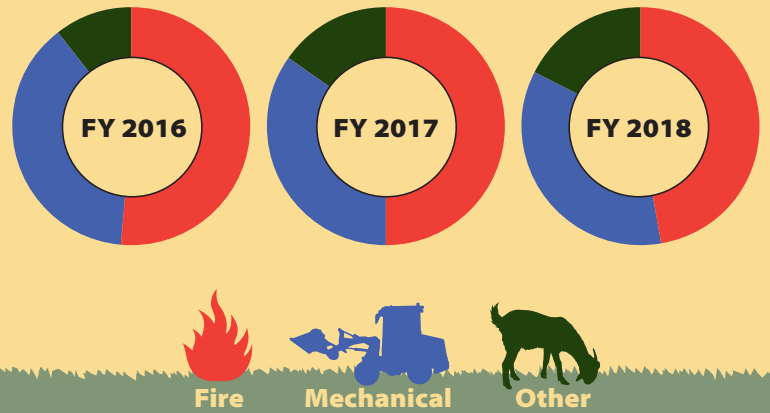
Bureau of Land Management

Acres of fuel treatments across DOI agencies

Acres by WUI and Non-WUI



Acres by Treatment Category



Acres by Wildfire Geographic Area Coordination Center

