



# Homegrown

featuring  
**Renelle White Buffalo**



May 26 to July 28, 2017

Renelle White Buffalo, an enrolled member of the Rosebud Sioux Tribe, was born and raised in South Dakota. She holds a Bachelors of Fine Arts Degree from Iowa State University. Currently she resides in New York City, where she works full-time as a professional artist.

She creates a broad range of works, including paintings on canvas, monotypes, and mixed media sculptures. Her color palette is often drawn from the environment around her. Currently, she is experimenting with colors inspired by her recent residency at the Jentel Foundation in Banner, Wyoming. Both the natural and cultural history of the South Dakota prairies provide her with additional inspiration for her work. In her paintings, Renelle transforms traditional Lakota symbolism into contemporary abstract artwork, allowing the composition to create a cross-cultural conversation. The bold and confidently-layered brushstrokes of acrylic paint incorporate personal meaning and connections to her Native American roots. Her work challenges the stereotypes and redefines the perceptions of being indigenous today, both on and off the reservation.

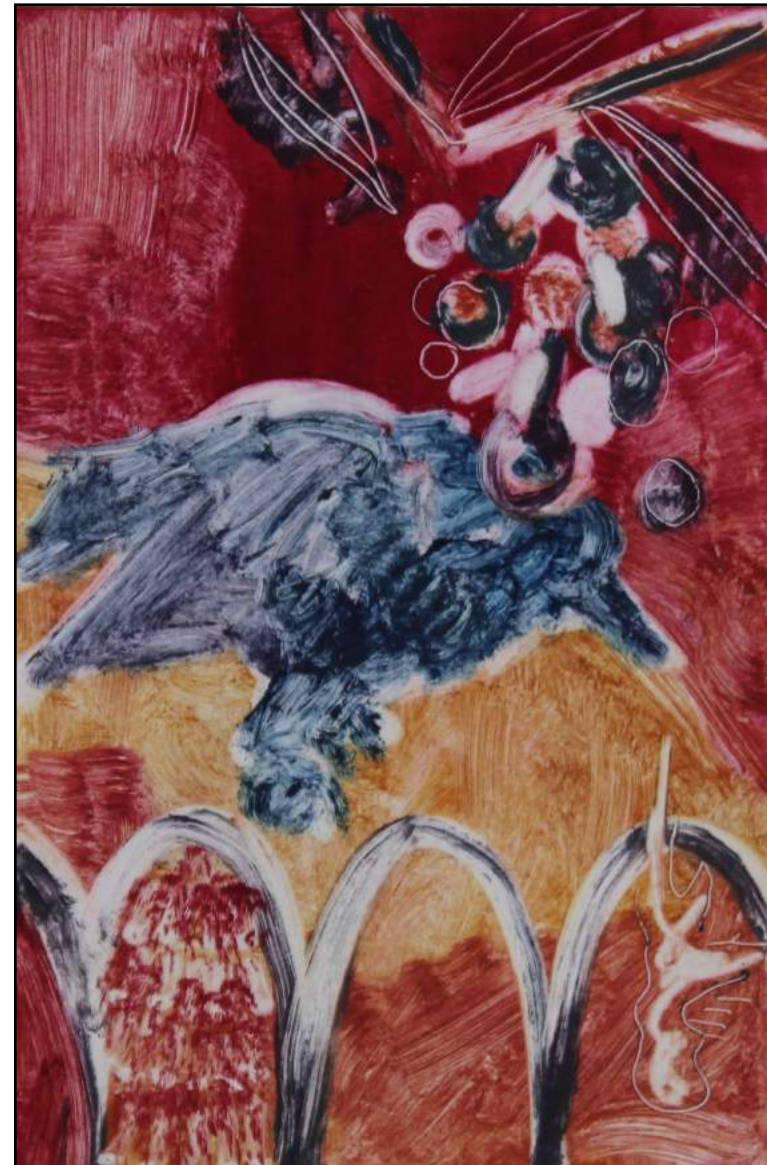
Renelle's work has been exhibited in numerous venues, including the Blue Rain Gallery, Santa Fe, New Mexico, the Exposure Gallery, Sioux Falls, South Dakota, and Northern State University, Aberdeen, South Dakota. This exhibition marks the first time her works have been shown in a museum setting.

Prices for the artwork can be obtained by contacting The Journey Museum Store at (605) 394-2201. To purchase artwork after the exhibit closes, please contact Renelle White Buffalo through her website, [www.whitebuffaloart.com](http://www.whitebuffaloart.com).

*The Sioux Indian Museum, managed by the U.S. Department of the Interior, Indian Arts and Crafts Board, is located in The Journey Museum, 222 New York Street, Rapid City, SD 57701. For admission fees and hours of operation please call (605) 394-6923.*

# Homegrown

featuring  
**Renelle White Buffalo**



*Crow Under Choke Cherries*  
Monotype

© 2017 Renelle White Buffalo

May 26 to July 28, 2017



*Crow in the Lilac Bush*  
Monotype  
© 2017 Renelle White Buffalo



*Lilac Bush at  
the Blue House*  
Monotype  
© 2017 Renelle  
White Buffalo



*White Buffalo Sisters Go to  
Boarding School*  
Monotype  
© 2017 Renelle White Buffalo



*Philomene and Franklin by  
the Morning Glories*  
Monotype  
© 2017 Renelle White  
Buffalo