



## *Re-Vision* featuring Wade Patton



July 29 – September 30, 2016

Wade Patton is a contemporary Oglala Lakota artist who provides a new perspective on Native arts for audiences. Born on the Pine Ridge Reservation and raised in Rapid City, South Dakota, Wade grew up with an appreciation for the arts and culture that surrounded him. As a child he naturally gravitated to art, preferring to draw rather than play outside. After receiving a BFA from Black Hills State University, Wade left South Dakota to pursue his artistic career in Boston, Massachusetts. He spent over a decade in Boston developing his craft as well as working as a professional art framer. Wade recently returned to South Dakota, where he now works full time as an artist.

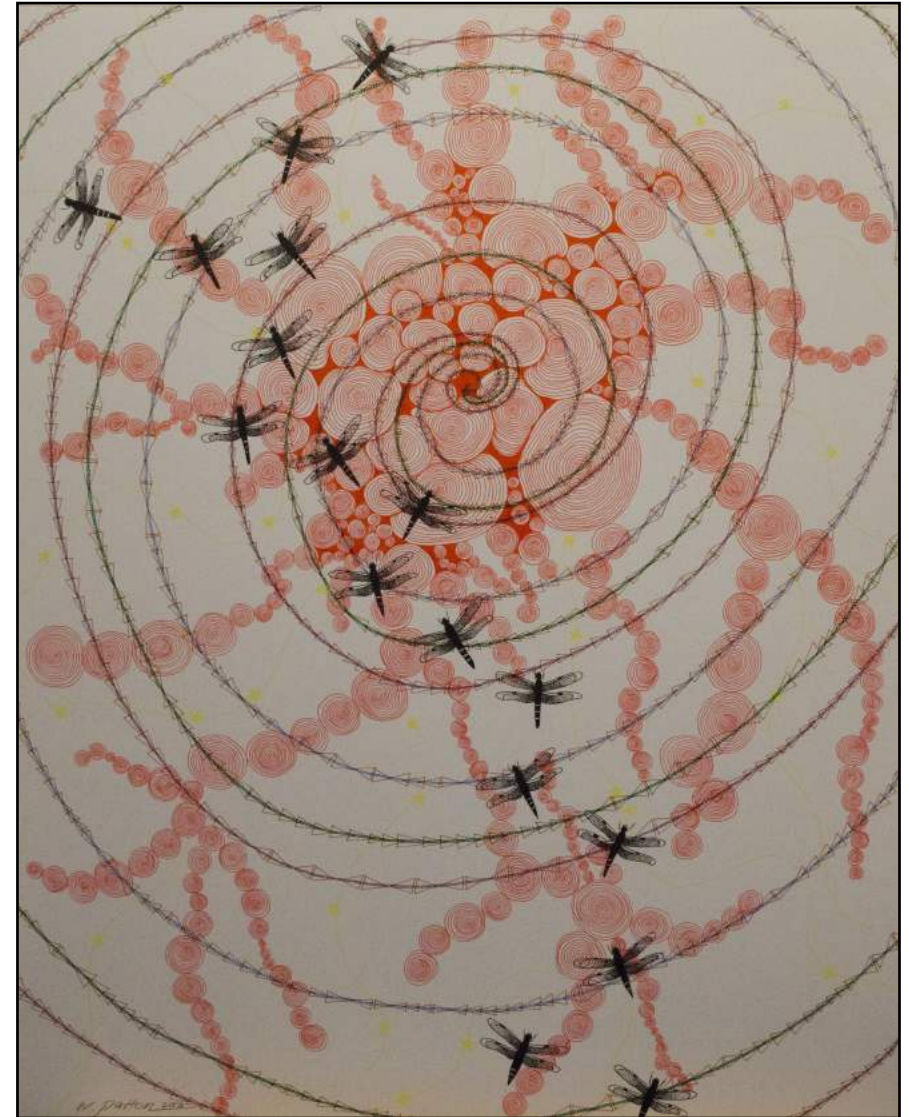
Although Wade is best known for his oil pastels and ledger art, he explores a wide variety of media in his work, including ceramics, quilting, and painting. One of Wade's signature subjects is clouds, which often find their way into both his ledger art and pastels. While these clouds invoke imagery of the Great Plains skies, in actuality, they were inspired by the views from the Boston framing gallery where Wade worked for many years.

For this exhibition, Wade has continued to expand his reach and vision, creating unique works with the intent of breaking out from the style of his earlier art. The subject matter for these works center around traditional Lakota cultural themes: bison, dragonflies, and the six pointed star. These themes have been given a modern interpretation, influenced in part by a recent trip Wade made to Boston, and his exposure to other contemporary artists. Through the use of layering, Wade has created vibrant drawings that build on geometric shapes to create fluid and dynamic images.

Wade has received multiple awards for his work including: The ML Woodard Award at the 2016 Red Cloud Indian Art Show, Pine Ridge, South Dakota; Special Award, Emerging Artist Division at the 2015 Gathering of People, Wind and Water, Rapid City, South Dakota; and a 2016 Artist in Residency at Crazy Horse Memorial, Custer, South Dakota.

Prices for the artwork in the exhibition can be obtained by contacting The Journey Museum Store at (605) 394-2201. To purchase artwork after the exhibit closes, please contact Wade Patton at [kwadepat@hotmail.com](mailto:kwadepat@hotmail.com)

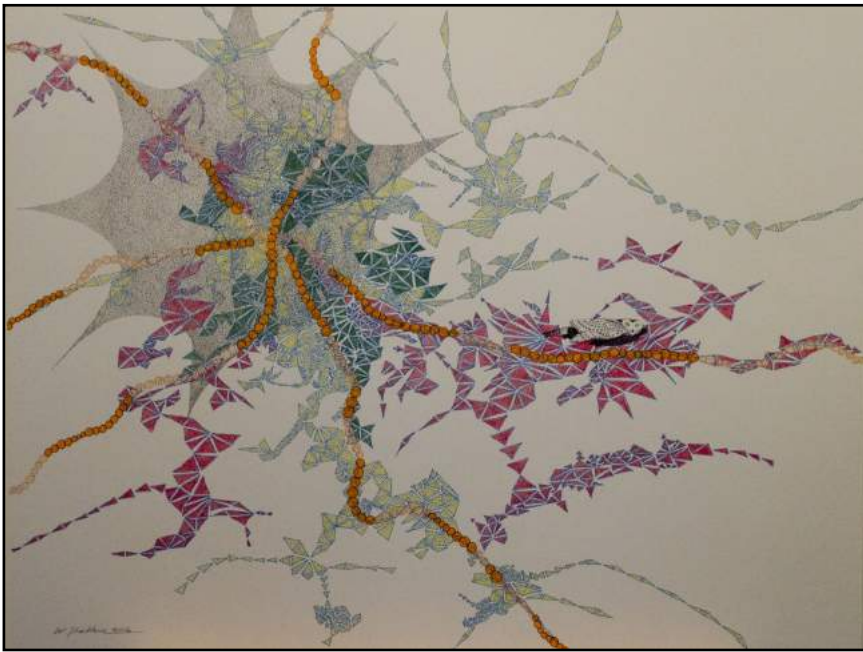
## *Re-Vision* featuring Wade Patton



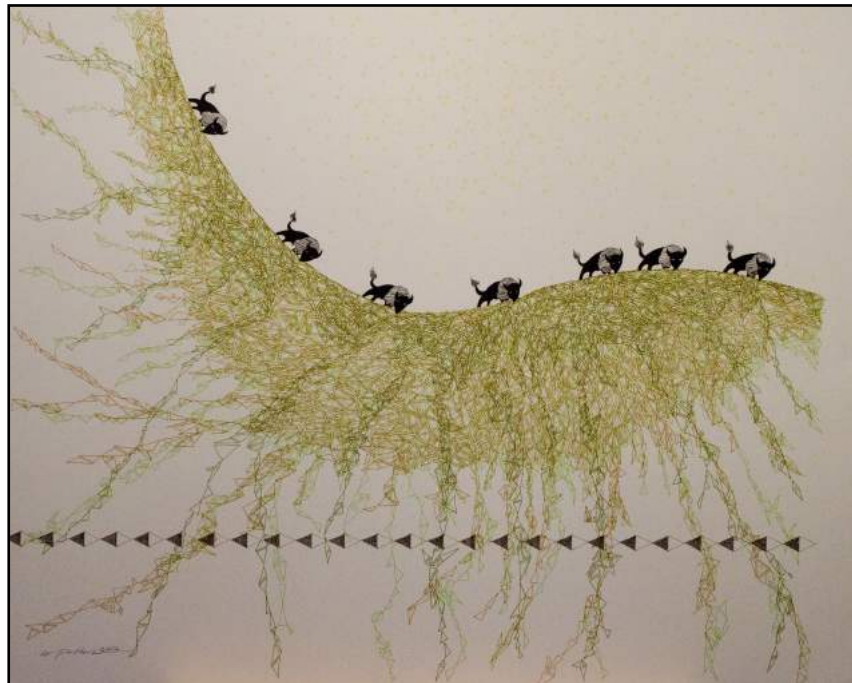
### *Flight*

Prismacolor and Micron Inks on Bristol Board

© 2016 Wade Patton

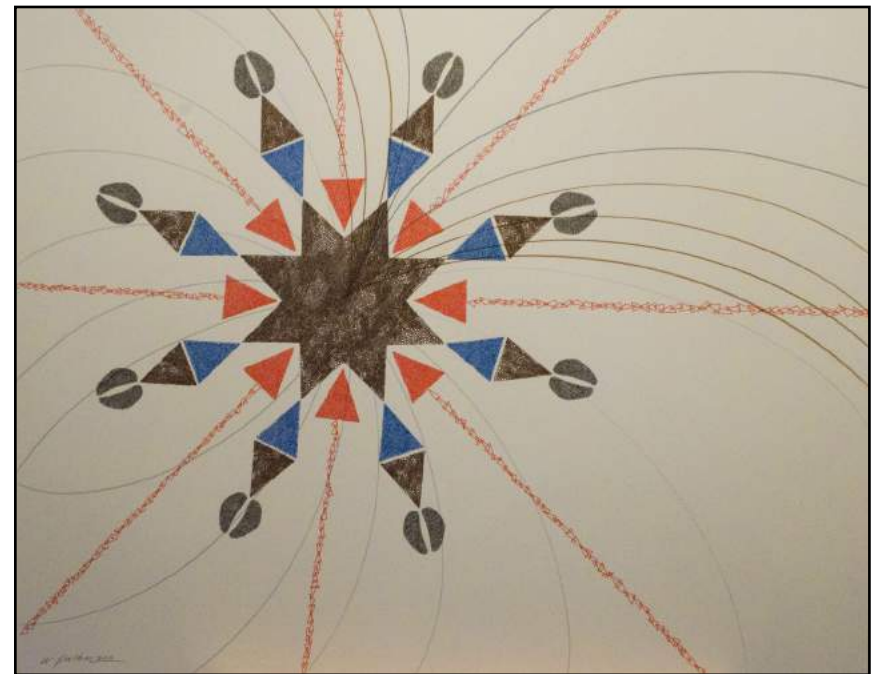


**Breakthrough**  
Prismacolor and Micron Inks on Bristol Board  
© 2016 Wade Patton



**Prairie**  
Prismacolor and Micron Inks on Bristol Board  
© 2016 Wade Patton

**Flutter**  
Prismacolor and Micron Inks on  
Bristol Board  
© 2016 Wade Patton



**Star**  
Prismacolor and Micron Inks on Bristol Board  
© 2016 Wade Patton